

"Spelman educates the global leaders and innovators who choose to change the world."

—Dr. Mary Schmidt Campbell, President

Office of Institutional Research
Assessment & Planning (OIRAP)
350 Spelman Lane, Box 875
Atlanta, GA 30314
Office: 404-270-5675
Fax: 404-270-5676



Spelman College®

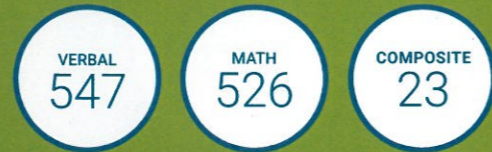
A Choice to Change the World

Email: oirap@spelman.edu
www.spelman.edu/oirap

first-time, first year PROFILE



(Average SAT Scores) (Average ACT Score)



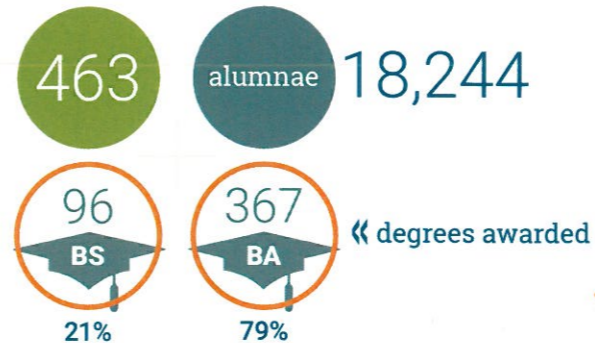
residency

587	Georgia	27.6 %
1,520	Other States	71.5 %
18	Foreign Countries	0.9 %
41	Number of States Represented*	

Top 5 States: Georgia, New York, Maryland, California and North Carolina

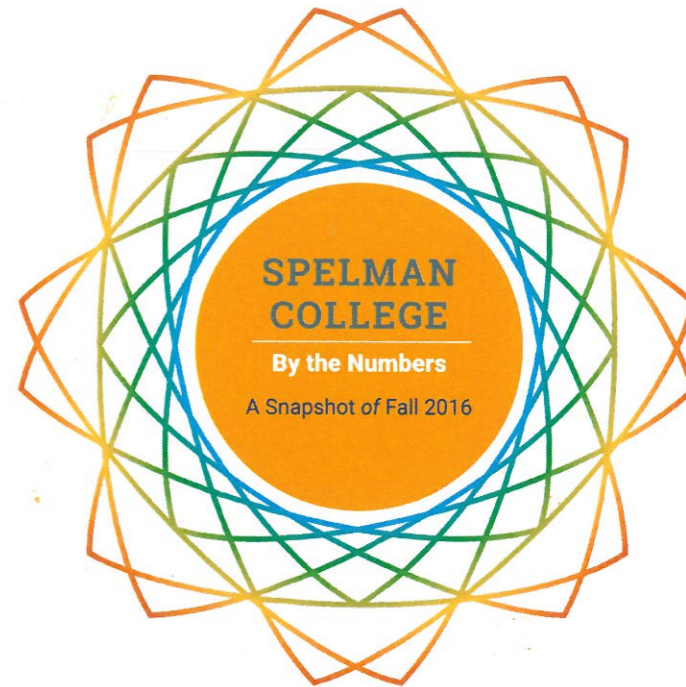
(*Includes District of Columbia, Europe, Virgin Islands, and Military)

total graduates



Note: Graduates are from July 1, 2015 to June 30, 2016

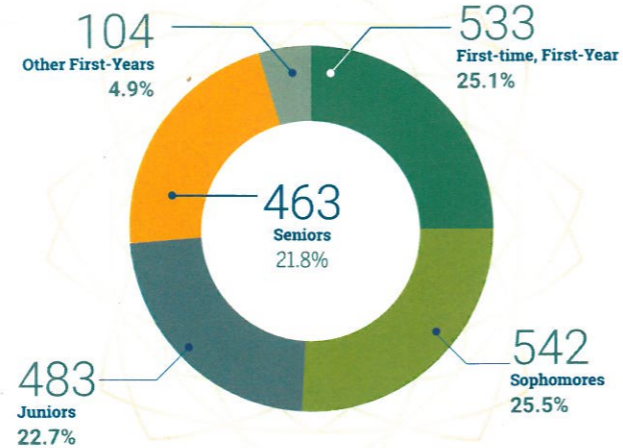
IPEDS Yr	Cohort Yr	Head Ct	Retention			Graduation		
			2Yr	3Yr	4Yr	4Yr	5Yr	6Yr
2015-16	2009	563	88%	83%	80%	69%	73%	76%
2016-17	2010	536	89%	85%	81%	71%	75%	77%



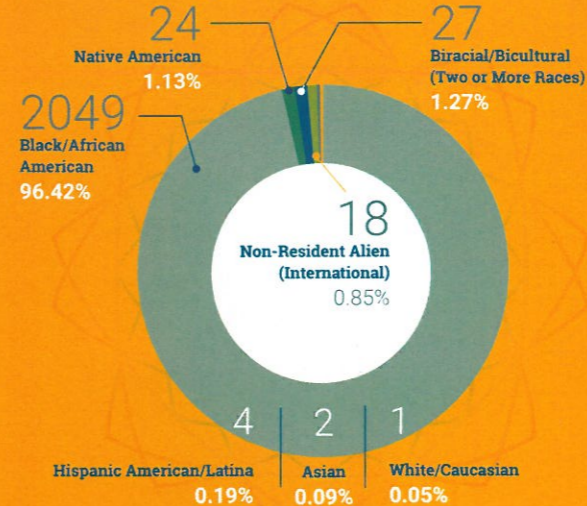
ABOUT Spelman

Founded in 1881 as the Atlanta Baptist Female Seminary, we became Spelman College in 1924. Now, a global leader in the education of women of African descent. Spelman is accredited by the Southern Association of Colleges and Schools Commission on Colleges (1866 Southern Lane, Decatur, GA 30033, 404-679-4500) to award baccalaureate degrees. We are proud members of the Atlanta University Center. Spelman is led by Dr. Mary Schmidt Campbell, our 10th president.

student body



ethnicity



9:1 student to faculty ratio

2125
students

2061 full-time
64 part-time
FTE: 2086

248
faculty

171 full-time
77 part-time

cost of attendance:



\$ 23,626
Tuition



\$ 3,688
Fees



\$ 12,795
Room & Board