

Health Careers Program

October Newsletter



About Us



The Health Careers Program of Spelman College was initiated in 1971 to advance more and better-qualified young women into the professional and allied health professional schools of medicine, dentistry, osteopathy, optometry, podiatry, pharmacy, veterinary medicine, and graduate health programs. Since 1970, the College has been successful in assisting well over 800 of its students in gaining admission to many prestigious professional and allied health professional institutions.



In this newsletter you will find:

Latest updates, events, reminders, and more. Keep Reading!



Upcoming Events



Oct
03

Partner Institution Open House

Interested in getting accepted to a graduate or professional school early? Find out how by attending the open house! You will have the opportunity to meet admissions representatives and learn about different opportunities!



Oct
10

Emory Nursing Lunch and Learn

Interested in getting accepted to a graduate or professional school early? Find out more about the Nell Hodgson Woodruff School of Nursing at Emory University. This event is virtual via zoom at 12:00 PM. RSVP with the QR code.



Oct
10

Johns Hopkins & UPenn Nursing Consortium Lunch and Learn

Interested in getting accepted to a graduate or professional school early? Learn more about the schools and their program at 12:00 pm in Science Center room 134. RSVP with the QR code.



Oct
12

Morehouse School of Medicine Career Development Leadership Retreat

Students will engage in professional career development designed to prepare them for future opportunities.



Oct
17

Peer Mentor Session 1

Calling all first-years and sophomores! These group sessions are designed for students to hear from trained upperclassmen some tips to be successful at Spelman on their pre-health journey. This event begins at 11:00 AM.



Upcoming Events

Oct
19

Junior/Senior Workshop

Attention juniors and seniors! This workshop series is specifically created to provide you with guidance on your next steps for applying to graduate or professional school. Be sure to attend to find out what's next for you!



Oct
24

Peer Mentor Session 2

Calling all first-years and sophomores! These group sessions are designed for students to hear from trained upperclassman some tips to be successful at Spelman on their pre-health journey. This event begins at 11:00 AM.



Oct
24

Lunch and Learn: Boston Public Health Select Scholars Information Session

Interested in getting accepted to a graduate or professional school early? Find out more about this program virtually via zoom at 12:00 PM. RSVP with the QR code.



Oct
24

Lunch and Learn: University of Rochester EAP

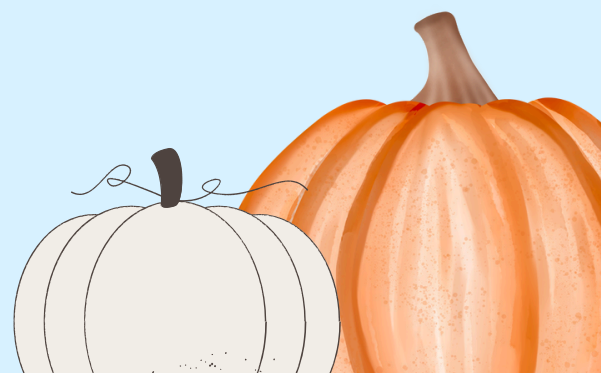
Interested in getting accepted to a graduate or professional school early? Find out more about this program virtually via zoom at 12:00 PM. RSVP with the QR code.



Oct
31

Peer Mentor Session 3

Calling all first-years and sophomores! These group sessions are designed for students to hear from trained upperclassman some tips to be successful at Spelman on their pre-health journey. This event begins at 11:00 AM.





Student Spotlight



American Heart Association Spelman College HBCU Scholars

Kaylin Calhoun



Kaylin Calhoun is a senior biology major Spelman College, native of Montgomery, AL. Dean's List Scholar, Ethel Waddell Githii Honors Scholar, and Thurgood Marshall Trust Gap Scholar. She is a Spelman Student Ambassador, as well as a member of her campus NAACP and the president of the Operation Smile Spelman College chapter. Kaylin has aspirations of becoming a pediatrician to advocate for children facing medical challenges and wants to use medicine to inspire courage and strength in young patients.

Mentor: Charles Searles, MD, Associate Professor of Medicine and Associate Vice Chair, Research and Space Management; Director, Cardiology Fellowship, Emory University School of Medicine

Kiera Metz



Kiera Metz is a senior biology major Spelman College, native of Pearland, TX. Dean's List scholar, Alpha Lambda Delta & Alpha Epsilon Delta Honor Societies member. She was a Student Researcher and Fellow at the Cincinnati Children's Hospital this summer and is a peer reviewer and journal contributor to the CDC Student Scientific Writing and Review Training Committee. Kiera's goal is to combine scientific research, public health, and medical practice to promote health equity, particularly in underserved communities, as a physician.

Mentor: Tennille Leak-Johnson, Assistant Professor, Department of Physiology, Cardiovascular Research Institute, Morehouse School of Medicine



Partnership Events

Oct
08

UAB Heersink School of Medicine Rural Medicine Programs Preview Day

Lasti from 2-4 PM at UAB Heersink School of Medicine. Register at the following link: <https://admissions2.som.uab.edu:9443/Prospect/SignupEvent.aspx?id=84>



Oct
09

Agnes Scott 5th Annual Women's Global Leadership Conference

This year's event will highlight inclusive health equity, featuring Dr. Mandy Cohen, the CDC director. It's a great opportunity for psychology students interested in how health equity affects mental health. Don't miss out—register with this link: Register at the following link using the promo code CollegeFriends24!

https://whova.com/web/eAOUEM5xdu7kDi1apQ-7DG9yrlKNxbYaOmpMKLxM5jk=



Oct
16

CareerEco Virtual Optometry Fair

Calling all prospective optometry students! Dive into the career of optometry at the upcoming virtual fair. It's a great way to get to know all the schools and colleges of optometry in one place. [Optometry Virtual Fair \(careereco.com\)](https://www.careereco.com)



Oct
16
&
17

AAMC Virtual Medical School Fair

This is a two day event. Join for live information sessions on key topics for your medical school journey, including reapplication tips and anxiety management strategies. Take part in mock interviews and explore postbaccalaureate programs and the MD-PhD pathway. Visit the exhibit hall to connect with program representatives through chats, messages, or Zoom sessions. Engage with medical schools, postbaccalaureate programs, special master's programs, and student groups. Details can be found at <https://aamcmedschoolfair.vfairs.com/>



Association of
American Medical Colleges

Partnership Events

Oct
19

Michigan School of Public Health Prospective Graduate Student Experience

This is an in person event for students interested in pursuing a graduate degree in public health. Find more details at the following link: <https://sph.umich.edu/admissions/prospective-graduate-student-experience.html>



Oct
18

Columbia University Narrative Medicine Virtual Workshop

This is a three day workshop. Come experience the foundational elements of narrative medicine, presented by our faculty and practiced alongside participants from around the world in our immersive online format! Join us for a weekend of intensive skill-building in the core aspects of narrative medicine practice. The Division of Narrative Medicine offers a transformative virtual experience, including lectures, small group work, literature, educational and networking resources, continuing education credits, and direct interaction with narrative medicine faculty. Live virtual sessions combine with asynchronous learning modalities to deliver an introduction to the field that provides the same learning, connection, and profound experience as traditional in-person workshops. Find more details and registration available [here](#).



Oct
19



Oct
20



Nov
09

AAMC 2024 Diversifying the Next Generation of Doctors: Career Fair and Workshops!

This event is designed for students, interested in careers in medicine and biomedical sciences, and it is free for all attendees. The AAMC, a nonprofit association, supports 154 accredited U.S. medical schools and numerous academic health systems, aiming to enhance health through education, research, and community collaboration. More information [here](#). Register with the QR code.





Tips for Success

Summer Programs

Over the coming month, take time to reflect on your interests and career goals, and start researching potential summer programs and career-advancing opportunities.

Applications usually open in mid to late November and can close as soon as the first few weeks of January.

Letter of Recommendations

Most summer programs require letters of recommendation from your STEM professors or pre-health advisors. Now is an ideal time to start attending office hours and building relationships to improve your chances of securing a letter of recommendation.



HEALTH CAREERS HELPFUL HINTS & HIGHLIGHTS

Your source for insight and staying ahead

Drafting Your Personal Statement

To be considered for admission, many summer program applications call for a personal statement. Start drafting it by reflecting on your motivations and reasons for pursuing medicine and your chosen specialty. Essentially, the personal statement should convey the "why" behind your decision to pursue a career in healthcare.

Networking

The Health Careers Program provides ample opportunities to network and connect with students, faculty, and admissions representatives. Networking in this context is a valuable way to uncover new opportunities, exchange insights, and develop essential skills such as communication and public speaking.



Pathway to Passion

A flowchart to help you explore and integrating your passion into a career in health!

Are you interested in direct patient care, research, or administration?

Direct patient care:
Choose your population

Career Options for Children:

- Pediatrician
- Pediatric Nurse
- Child Psychologist

Career Options for Adults:

- Family Physician
- Nurse Practitioner
- Physical Therapist
- Mental Health Counselor

Career Options for Elderly:

- Geriatrician
- Geriatric Nurse
- Social Worker
- Occupational Therapist

Research: Focus
Area in Research

Clinical: Clinical
Research Coordinator

Laboratory:
Biomedical Scientist

Public Health:
Epidemiologist

Administration: Type
of Administration

Health Services: Health
Services Manager

Hospital Management:
Hospital Administrator

Policy: Health
Policy Analyst

Explore the diverse careers within the healthcare field and find the path that resonates with you! From clinical roles to administrative positions, there are countless opportunities waiting for you. Take the time to research different options, ask questions, and learn about the various specialties. Your unique skills and passions can lead to a rewarding career that makes a difference in people's lives. Start your journey today—your ideal healthcare career is just around the corner!

Interactive Pre-Health Quiz

1. Who was the first African American woman to earn a medical degree in the United States?

- A. Rebecca Lee Crumpler
- B. Mary Eliza Mahoney
- C. Jane Cooke Wright
- D. Elizabeth Blackwell

2. This physician was a trailblazer in dermatology and was one of the first Black doctors to be accepted into the American Academy of Dermatology. Who is she?

- A. Mae Jemison
- B. Jane Cooke Wright
- C. Patricia Bath
- D. Gladys West

3. Which Black medical researcher is known for her development of the "Ball Method," a treatment for leprosy, and made significant contributions to public health?

- A. Alice Ball
- B. Rebecca Lee Crumpler
- C. Marie Maynard Daly
- D. Lorraine Williams

4. Who was the first African American woman to be accepted into the Medical School at the University of Pennsylvania and later became a prominent advocate for medical education for African Americans?

- A. Mary Eliza Mahoney
- B. Rebecca Lee Crumpler
- C. Jane Cooke Wright
- D. Susan Smith McKinney Steward

5. Which Black scientist and physician is known for her research in pharmacology and toxicology and was one of the first Black women to earn a Ph.D. in chemistry?

- A. Marie Maynard Daly
- B. Alice Ball
- C. Patricia Bath
- D. Rebecca Lee Crumpler

Answers: 1. A. Rebecca Lee Crumpler, 2. C. Patricia Bath, 3. A. Alice Ball, 4. D. Susan Smith McKinney Steward, 5. A. Marie Maynard Daly

