

## A New Year for Spelman's CIC

### What Is the Census Information Center?

The Census Information Center (CIC) is a cooperative program between the U.S. Census Bureau and 52 national, regional, and local non-profit organizations. This program represents the interest of underserved communities. The centers serve as repositories of census data and reports, making census information and data available to the public and the communities they serve. The CICs use census data in areas such as program planning, assessing advocacy needs, defining service areas, public policy development, developing new business enterprises, and conducting race/ethnic-related research. Individually, and in concert with other community service organizations, the Spelman College's CIC focuses on strengthening community development organizations

by improving access to information and national resources for Atlanta University Center (AUC) faculty and students, local activists, minority low income groups, housing, and neighborhood development organizations. Most of the Spelman's CIC projects involve assessment of area needs and local population characteristics. The CIC national databases

Clients could seek information from population data sets or the specialized surveys on education, housing, elections, etc. through the Center.

Our primary objectives in the Spelman's CIC are:

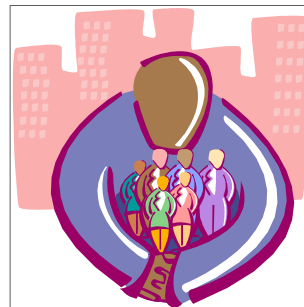
⇒ Make the Spelman's CIC a resource for information on Census related data for diverse community groups.

⇒ Promote university-community involvement in community development.

⇒ Promote AUC student and faculty development and involvement in community services.

⇒ Promote awareness of the Census as a resource base.

⇒ Encourage AUC students and faculty to integrate Census material in their classrooms, research and career plans.



Spelman's CIC serves its community.

have been major assets in providing crucial information on demographic, housing and economic information.

#### A New Staff Member Joins Spelman's CIC

In December 2003 we had an addition to our staff. Samatha Brown comes to us by way of Clark Atlanta University, where she recently earned her Master of Arts degree in sociology. She possesses extensive experience working with census data. We are excited to have her on our team!

#### Quick Community Facts\*

- In 1997, 20.7% of Fulton County firms were minority-owned
- In 1997, 33.5% of Dekalb County firms were minority-owned
- African Americans accounted for 44.6% of Fulton County's total population in 2000
- African Americans accounted for 54.2% of Dekalb County's total population in 2000
- In 2000, 21.3% of families in the City of Atlanta were below the poverty line

\*from [quickfacts.census.gov](http://quickfacts.census.gov)

#### CONTACT US

Spelman College  
 Census Information Center  
 Giles Hall-Room 209  
 Atlanta, GA 30314  
 Phone: 404-270-5631  
 Fax: 404-270-5632  
 Email:  
[CensusInfoCenter@spleman.edu](mailto:CensusInfoCenter@spleman.edu)

#### STAFF:

Bruce Wade, PhD  
 Director CIC  
 Samatha Brown, MA  
 Research Associate

#### ADVISORY STAFF:

Moshe Haspel, PhD-Political Sci. Dept.  
 Jack Stone, PhD-Economics Dept.  
 Romie Tribble, PhD-Economics Dept.