

COMMUNITYCOUNTS



Spelman's CIC Newsletter



In This Issue

- Mapping the percentage of households owned in select counties in Georgia by race
- Mapping the percentage households rented in select counties in Georgia by race
- General housing characteristics for GA counties

Spelman College's Census Information Center

Spelman College Census Information
Center

Giles Hall- Room 209
Campus Box
Atlanta, GA 30314

Phone: 404-270-5631

Fax: 404-270-5632

Email: CensusInfoCenter@spelman.edu

URL: www.spelman.edu/cic/index.html



Organization

March 2004

Volume 1, Issue 3

General Housing Characteristics for Select Counties 2000

Clayton County, Georgia

TENURE	NUMBER	PERCENTAGE
<i>Occupied Housing Units</i>	82,243	100
<i>Owner-Occupied</i>	49,844	60.6
<i>Renter-Occupied</i>	32,399	39.4

RACE OF HOUSEHOLDER	NUMBER	PERCENTAGE
<i>White</i>	34,316	98.4
<i>Black or African America</i>	41,985	41.7
<i>American Indian and Alaska Native</i>	243	51.0
<i>Asian</i>	2,513	.03
<i>Hispanic or Latino (of any Race)</i>	4,144	5.0

Cobb County, Georgia

TENURE	NUMBER	PERCENTAGE
<i>Occupied Housing Units</i>	227,487	100
<i>Owner-Occupied</i>	155,055	68.2
<i>Renter-Occupied</i>	72,432	31.8

RACE OF HOUSEHOLDER	NUMBER	PERCENTAGE
<i>White</i>	171,318	75.3
<i>Black or African America</i>	41,727	18.3
<i>American Indian and Alaska Native</i>	529	0.2
<i>Asian</i>	5,791	2.5
<i>Hispanic or Latino (of any Race)</i>	11,039	4.9

DeKalb County, Georgia

TENURE	NUMBER	PERCENTAGE
<i>Occupied Housing Units</i>	249,339	100
<i>Owner-Occupied</i>	145,825	58.5
<i>Renter-Occupied</i>	103,514	41.5

RACE OF HOUSEHOLDER	NUMBER	PERCENTAGE
<i>White</i>	108,072	43.3
<i>Black or African America</i>	123,142	49.3
<i>American Indian and Alaska Native</i>	488	0.2
<i>Asian</i>	8,299	3.3
<i>Hispanic or Latino (of any Race)</i>	12,186	4.9

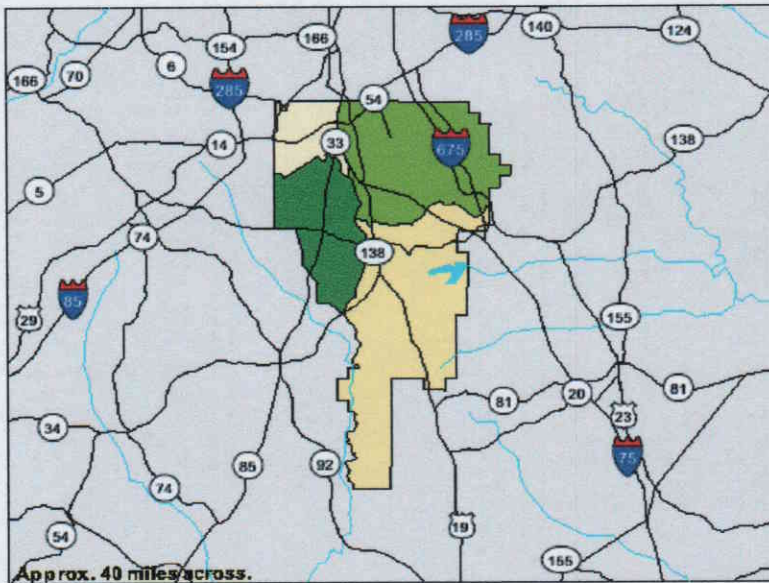
Fulton County, Georgia

TENURE	NUMBER	PERCENTAGE
<i>Occupied Housing Units</i>	321,242	100
<i>Owner-Occupied</i>	167,119	52.0
<i>Renter-Occupied</i>	154,123	48.0

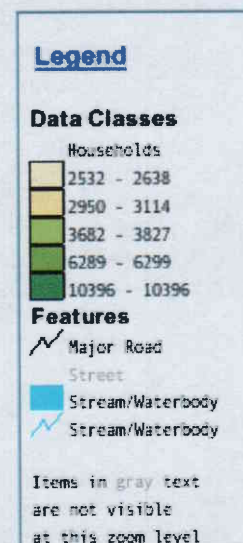
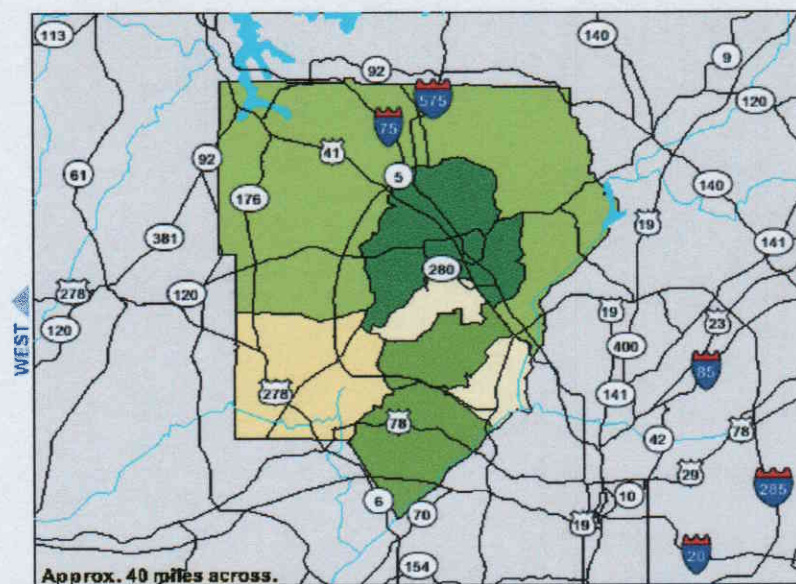
RACE OF HOUSEHOLDER	NUMBER	PERCENTAGE
<i>White</i>	171,895	53.7
<i>Black or African America</i>	131,944	41.1
<i>American Indian and Alaska Native</i>	575	.02
<i>Asian</i>	7,817	2.4
<i>Hispanic or Latino (of any Race)</i>	12,083	3.8

Households with a Householder Who is Black or African American Alone in 2000

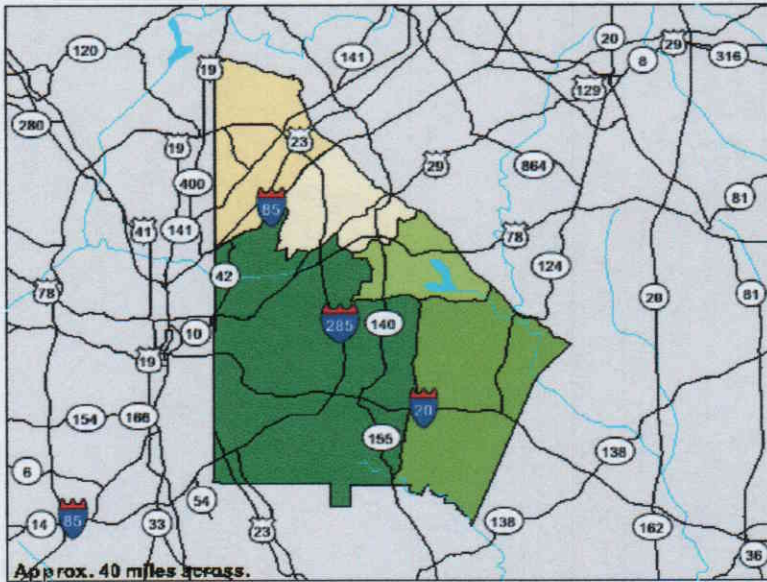
Clayton County, Georgia



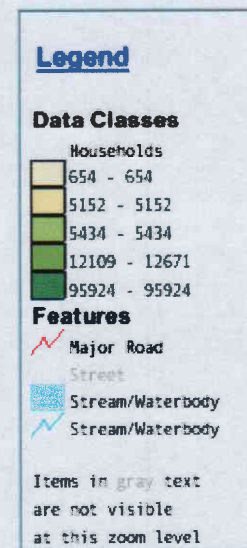
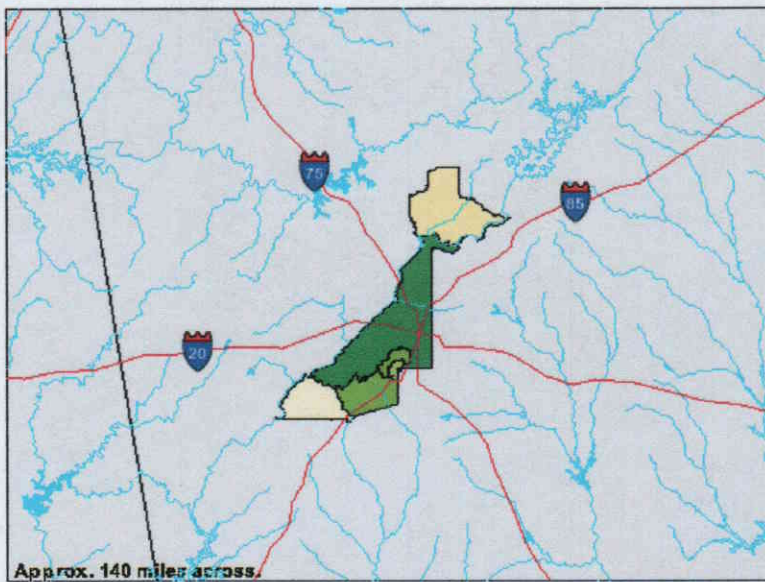
Cobb County, Georgia



DeKalb County, Georgia

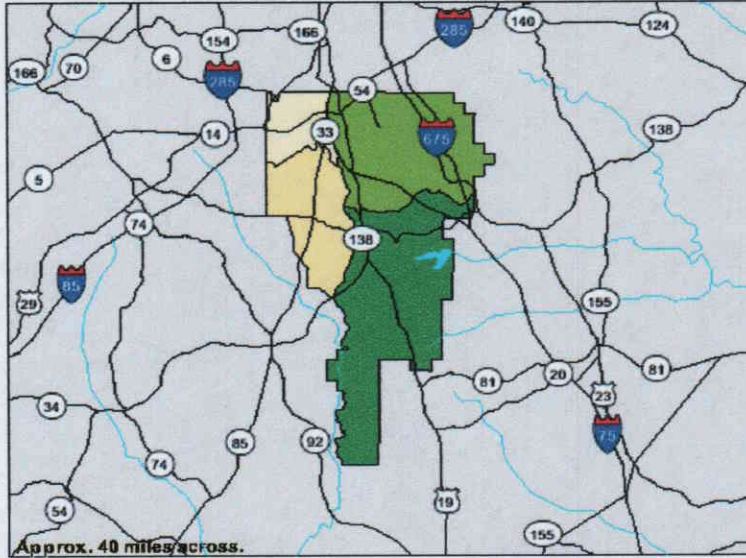


Fulton County, Georgia

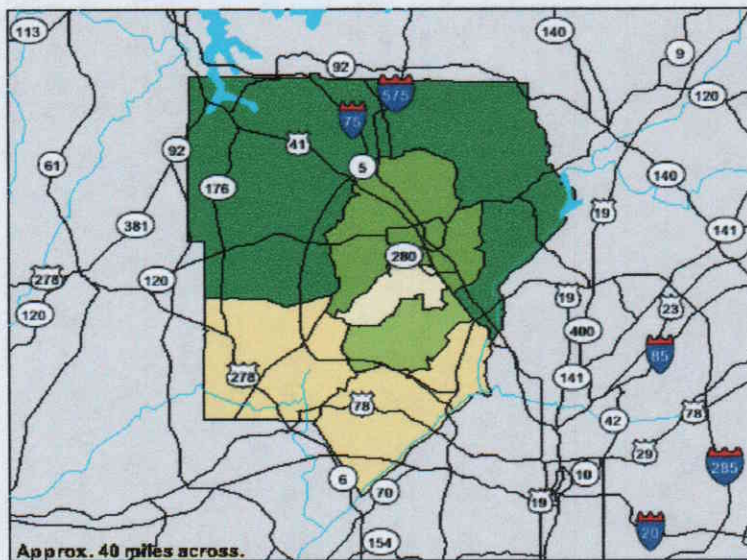


Households with a Householder Who is White Alone, Not Hispanic or Latino in 2000

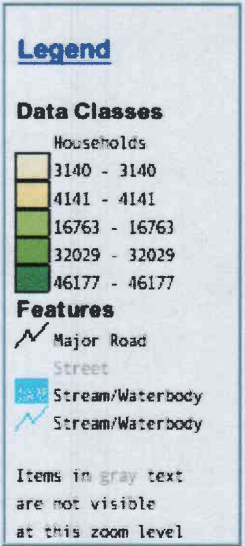
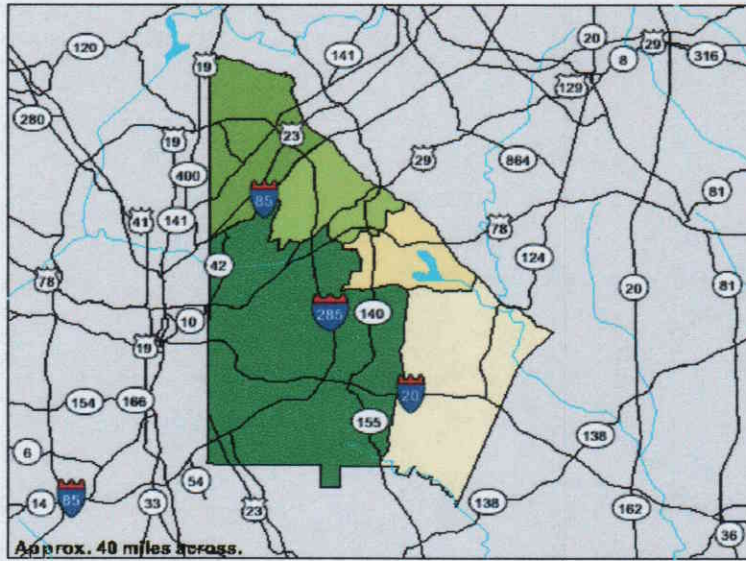
Clayton County, Georgia



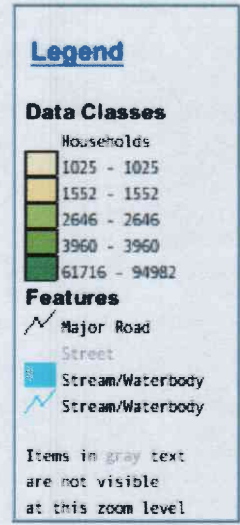
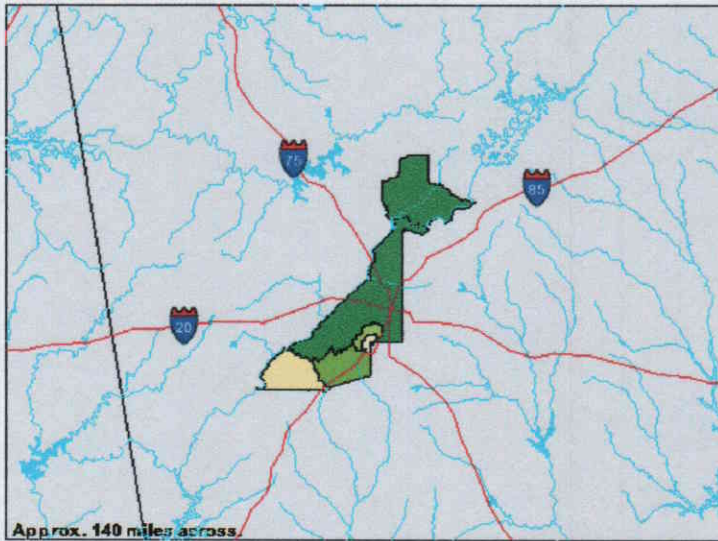
Cobb County, Georgia



DeKalb County, Georgia

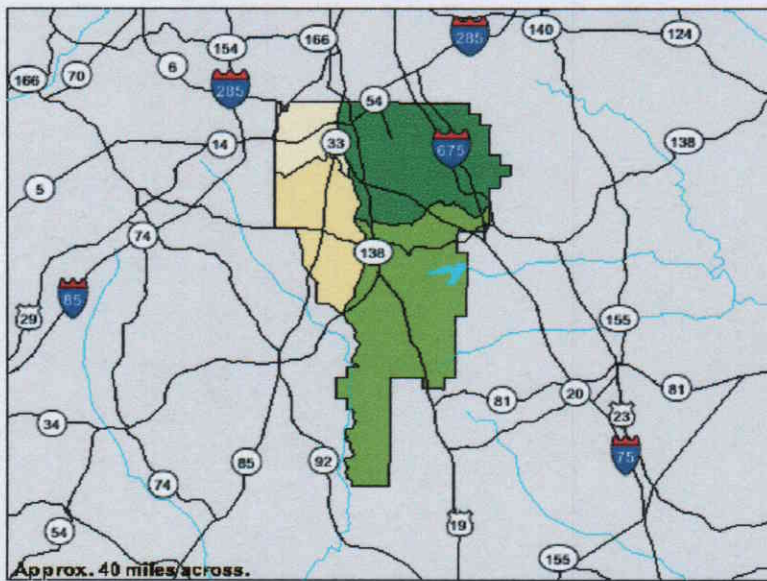


Fulton County, Georgia

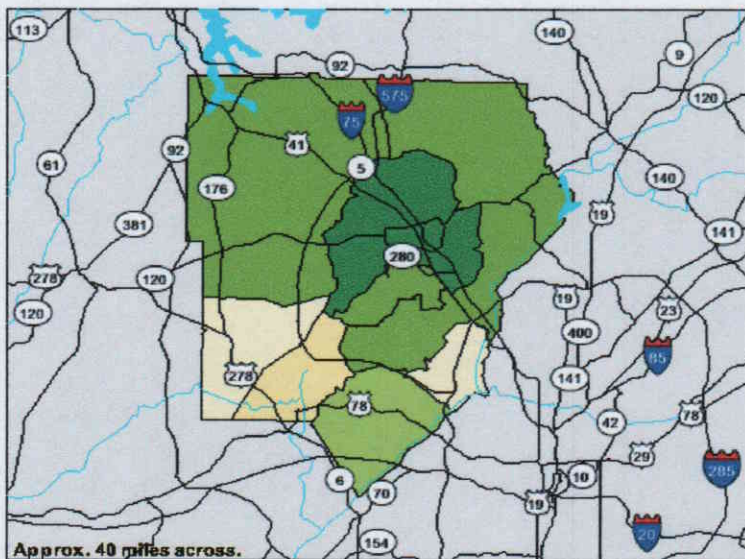


Households with a Householder Who is Hispanic or Latino (of any race) in 2000

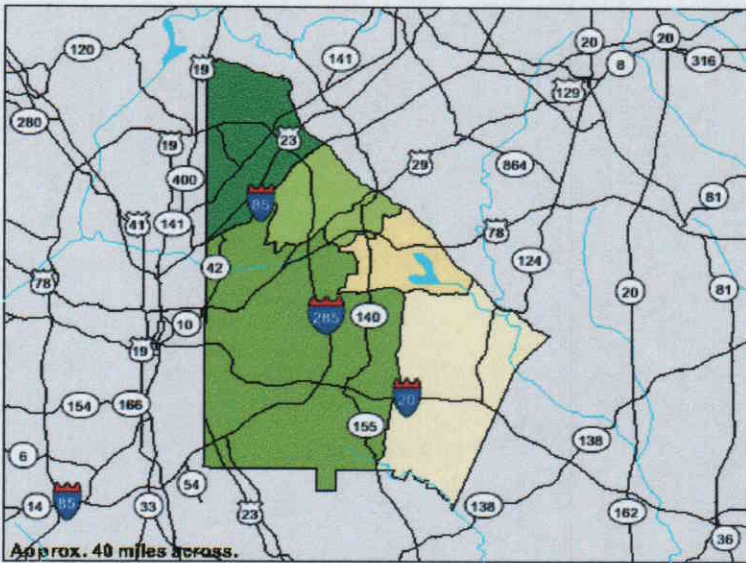
Clayton County, Georgia



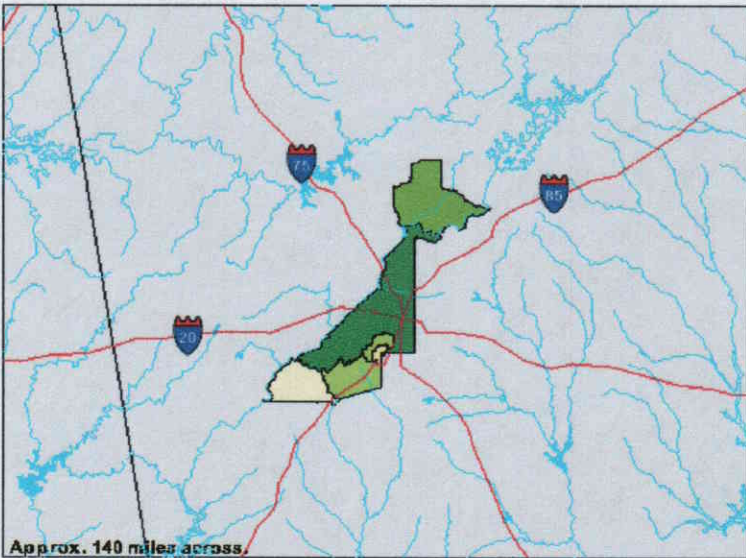
Cobb County, Georgia



DeKalb County, Georgia

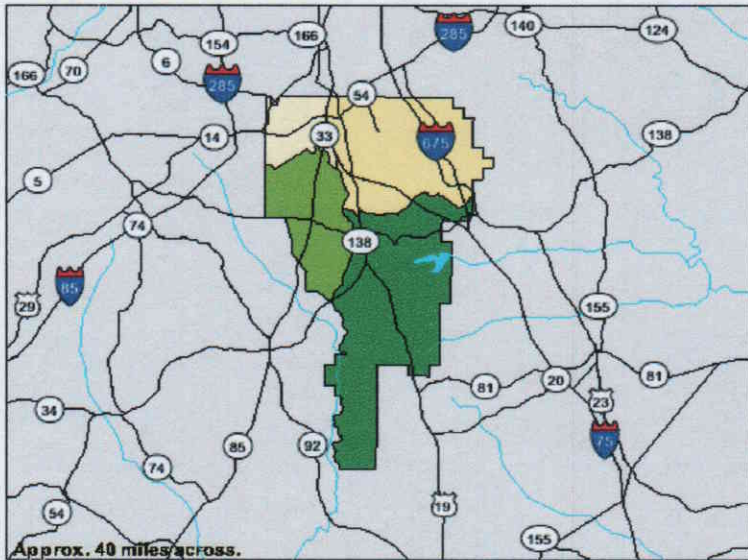


Fulton County, Georgia



Percent of Occupied Housing Units that are Owner-Occupied (Black or African American Householder) in 2000

Clayton County, Georgia



Cobb County, Georgia

