

INSIDE SPELTMAN

SUMMER
2005

Marian Wright Edelman Shares 10 Life Lessons at 2005 Baccalaureate

During her Baccalaureate address on the Spelman College campus oval, **Marian Wright Edelman, C'68**, founder and chief executive officer of the Children's Defense Fund, offered her thoughts, including 10 valuable life lessons (excerpts), to the Class of 2005.

I want to share a few life lessons, as you leave this cloistered place, from a letter I wrote to my three wonderful sons. Like them, you can take them or leave them, but you can't say you were never told or reminded. So here goes.

Lesson One: There is no free lunch. Don't feel entitled to anything you don't sweat and struggle for.

Lesson Two: Set thoughtful goals and work quietly and systematically toward them.

Lesson Three: Assign yourself. Don't be a political bystander and grumbler. Vote. Democracy is not a spectator sport.

Lesson Four: I hope you'll never work just for money. Don't confuse wealth or fame with character, and don't try to live your life through others.



Lesson Five: Don't be afraid of taking risks or of being criticized.

Lesson Six: Take parenting, family, and community life seriously.

Lesson Seven: Please remember and help America remember that the fellowship and sistership of human beings are more important than the club of race and class and gender in a democratic society.

Lesson Eight: Don't confuse style for substance, political charm with decency or sound policy. Speak truth to power.

Lesson Nine: Listen for the genuine within yourself so that you can hear it in other people.

Lesson Ten: Never think life is not worth living or that you cannot make a difference. And don't think you have to "win" immediately or even at all to make a difference. Sometimes it's important to lose for things that matter.

If you dream it, if you believe in it, if you have faith in it, struggle for it and never give up. God speed. ●

2005 Commencement Speaker Activist Zinn Inspires a New Spelman Generation

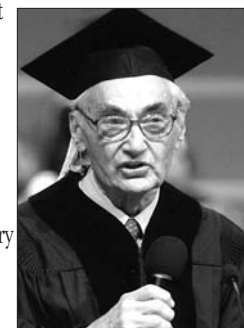
Forty years after inspiring and mentoring students during the civil rights movement as a Spelman College faculty member, **Dr. Howard Zinn** returned to inspire another generation of students as speaker for the College's 118th Commencement held at Cathedral at Chapel Hill in Decatur, Georgia, on May 14, 2005.

Dr. Zinn, historian, activist, educator and playwright, received an honorary doctor of humane letters at the ceremony where nearly 500 students celebrated becoming part of the Spelman alumnae sisterhood. Dr. Zinn, widely known for his book, *A People's History of the United States*, also edited *Voices of a People's History of the United States* in 2004 as a primary source companion, which has sold more than 1 million copies. His story has been captured in a recent documentary, "Howard Zinn: You Can't Be Neutral on a Moving Train." The following are excerpts from Dr. Zinn's commencement address:

... My first hope is that you will not be too discouraged by the way the world looks at this moment. It is easy to be discouraged, because our nation is at war.

But let me tell you why you must not be discouraged. ... My hope is that your generation will demand an end to war; that your generation will do something that has not yet been done in history — to wipe out the national boundaries that separate us from other human beings on this earth.

I was on the faculty of Spelman College for seven years, from 1956 to 1963. My wife Roslyn and I and our two children lived on campus.



Actress and humanitarian **Diahann Carroll** (left), a pioneer in television, film and theater, shown with **President Beverly Daniel Tatum**, received an honorary doctor of fine arts degree from Spelman during the 2005 Commencement ceremonies.



Continued on page 5.

Contents

Features

- 1 Marian Wright Edelman Shares 10 Life Lessons
- 1 2005 Commencement Speaker Activist Zinn Inspires a New Spelman Generation
- 7 Spelman's Second Annual Women of Color Leadership Conference Proclaims the Power of 'Difference'
- 8 Founders Day 2005: Legacy & Leadership: Following Faithful Footsteps

Departments

- 2 A Dialogue with Dr. T.
- 3 Spelman Salutes
- 5 News Briefs



350 Spelman Lane S.W., Atlanta, Georgia 30314
www.spelman.edu

EDITOR

Jo Moore Stewart

COPY EDITOR

Janet M. Barstow

GRAPHIC DESIGN

Garon Hart

EDITORIAL COMMITTEE

Tomika DePriest
Renita Mathis
Angela Allen
Eloise Alexis

CONTRIBUTING WRITERS

Denise McFall
TaRessa Stovall

PHOTOGRAPHERS

Wilford Harewood
J.D. Scott
Bud Smith
Julie Yarbrough

Inside Spelman

is published four times per academic year for a readership that includes alumnae, trustees, parents, students, faculty, staff and friends of the College. The newsletter is dedicated to informing our readers about news, upcoming events and issues in the life of the College.

In May 2005 we celebrated another wonderful commencement. Every year I look forward to the opportunity to greet each young woman on the stage as she steps forward to shake my hand and accept her diploma, as her family and friends cheer her on. It is a jubilant moment, the result of hard work and determination, a moment that approximately three out of four of those who enter the gates of Spelman College will share.

Our graduation rate of 76 percent is a source of pride – the highest graduation rate of any historically Black college and better than many predominantly White institutions, including our neighbor, Georgia Tech. But our graduation rate of 76 percent is also a source of consternation. Spelman College is nationally recognized as among the best liberal arts colleges in the nation, and yet other schools of that caliber boast graduation rates of 95 percent or higher. Why is our graduation rate so much lower? What happens to that one out of four students who doesn't reach the goal of a Spelman degree?

We know that for many Spelman students the answer to the question is, "I ran out of money." Though many people believe the myth that Spelman College is a wealthy school with many wealthy students in attendance, the fact is that we have many very needy students, and a very limited financial aid budget. More than 80 percent of our students apply for financial assistance, and most meet the eligibility requirements for federal loan programs. In fact, 50 percent of the members of the class of 2008 had an expected family contribution of \$2,500 or less. The 2005–06 cost of attendance (tuition, room and board) at Spelman College is \$24,400, significantly less than many private liberal arts colleges of our quality (which can cost \$40,000 or more), but still beyond affordability for these families.

Because of our limited scholarship resources, the average scholarship award is \$4,000, not enough to meet the need that most students have. These students must rely on large student loans and often 20–30 hours of part-time employment to cover the cost of attendance. With great effort, many students and their families are able to find a way to finance all four years of a Spelman education. But for others, perhaps as many as one in four, the burden becomes too much to bear. Some families are able to scrape together enough money to cover the first two years, but by the time the students have reached their junior year, they have reached their loan limit and expended all other resources. For others, a change in family circumstance – divorce, death or unemployment – shatters a fragile financial arrangement. Financial hardship will force them to discontinue their studies at Spelman or become part-time students, preventing the timely completion of their college education.

This is not the way we want this story to end! But we would have to increase our financial aid budget at least four times its current size to fully support our needy students. It is a daunting goal, but one that is ultimately achievable if we join together to build our endowment for need-based scholarships. Every gift, large or small, will move us closer to our goal of being able to provide needed support to Spelman students. I want to be able to greet every first-year student when she arrives at Spelman, knowing that in just four short years, I will be able to congratulate every one of them, not just 76 percent of them.

It is my commitment to this goal, and the knowledge of my own mother's struggle to pay for her college education after her father died, that inspired me to use the after-tax proceeds of the \$40,000 cash award that I received as part of the Brock International Prize for Education this past March to endow a scholarship in my mother's name. The money, invested as part of our endowment, will generate scholarship dollars well into the future. The Catherine Maxwell Daniel Scholarship will provide one more source of financial support for needy students, and might be just what some young woman needs to complete another semester at Spelman. Is there someone in your life you would like to honor? There is no better way than to establish a named scholarship, and create a never-ending legacy of opportunity at Spelman College. ●



Dr. Beverly Daniel Tatum



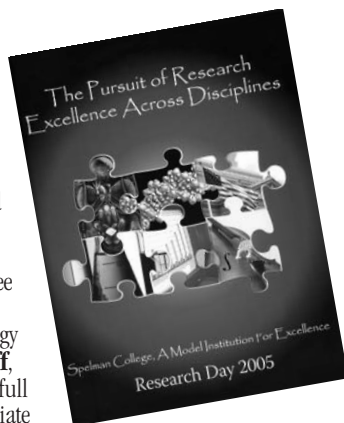
Catherine Maxwell Daniel

Spelman Salutes

Academic Achievements & Awards

During her “State of the College” presentation on May 10, President Beverly Daniel Tatum announced the following promotions from assistant to associate professor: **Dr. Dolores Bradley**, psychology; Education Chair **Dr. Marshalita S. Peterson**; **Dr. Natarajan Ravi**, physics; Philosophy and Religious Studies Chair **Dr. Rosetta Ross**. Receiving tenure were Associate Professor and Chair of Music **Dr. Kevin Johnson**; Associate Professor of Chemistry **Dr. Beatriz H. Cardelino**; incoming Chair of Biology **Dr. Cynthia M. Bauerle**; and incoming Chair of Education **Dr. Karen B. McLean Donaldson**. Tenured associate professors **Dr. Victor Ibeanusi**, biology, and **Dr. Pushpa Parekh**, English, were promoted to full professors.

On April 8, the 2005 Spelman College Research Day highlighted student-initiated research projects in the humanities, education, social sciences, natural sciences and mathematics. “The Pursuit of Research Excellence Across Disciplines” featured oral presentations and posters representing 14 academic departments and programs. The Research Day committee was co-chaired by **Dr. Cynthia Neal Spence**, associate professor of sociology and anthropology, and **Willa McGriff**, coordinator of freshman success, with full support from **Dr. Lily McNair**, associate provost of research. Boehringer-Ingelheim Inc. and Kimberly-Clark Corp. were corporate sponsors for the event.



On March 31, 2005, the American Chemical Society (ACS) included Spelman College on the list of colleges and universities approved by the organization. The approval designates the department of chemistry as a high-quality undergraduate chemistry program whose graduates are well prepared for entry into graduate school. Since the department of chemistry was established in 1977, the faculty has worked to strengthen the curriculum and strengthen course offerings. The goal of attaining ACS approval was conceived in the mid 80s by the then-department chair **Dr. Gladys Bayse**. Course offerings increased along with the size of the department under subsequent chairs **Drs. Albert Thompson and Cornelia Gillyard**.

Atlanta Mayor **Shirley Franklin** and the city of Atlanta Department of Watershed Management honored **Dr. Victor Ibeanusi**, professor of biology and chair, environmental science and studies, during a Black History Month celebration. Dr. Ibeanusi was recognized for his significant contributions to water and wastewater industries and environmental sciences. He was included in the “African-American Pioneers in Water & Environmental Sciences” exhibit on display in the City Hall Atrium from Feb. 22 through March 8.

The Women’s Caucus of the American Association of Higher Education (AAHE) presented the Myra Sadker award to **Dr. Beverly Guy-Sheftall**, director of the Women’s Research & Resource Center and Anna J. Cooper professor of women’s studies, during the AAHE national meeting held in Atlanta on March 19. The organization recognized Dr. Guy-Sheftall as one of the pioneers who motivated the women’s movement in higher education to broaden perspectives and consider the intersection of race, class and gender as they continued to research and teach.

In an affirmation of academic excellence, the Epsilon of Georgia Chapter of Phi Beta Kappa inducted 47 students selected on the basis of their excellent academic performance and recommendations from the faculty. In addition, **President Beverly Daniel Tatum** and **Dr. M. Bahati Kuumba**, associate professor of women’s studies, were inducted as honorary members.

Danielle Pritchett, C2005, received a Fulbright Fellowship to research the political roles of women in the Dominican Republic this fall. History (Caribbean concentration) and women’s studies major **Grace Sanders, C2005**, has been awarded the Thomas J. Watson Fellowship for 2005–2006. Ms. Sanders plans to travel to Barbados, Brazil, Kenya, Uganda and Australia to study the topic, “Beyond the Court: Female Volleyball Players as Agents for Social Change.”

Two members of the Spelman community were presented the Fannie Lou Hamer Award during the 2005 Founders Day ceremonies. This award honors individuals who have made a significant contribution to the community outside Spelman. **Dr. M. Bahati Kuumba**, associate professor of women’s studies, was recognized for community involvement and commitment to international and global women’s rights. Through activism, scholarship and teaching, she has raised political awareness about women’s issues. **Ms. Marian Parker**, planned giving officer in the Division of Institutional Advancement, was honored for her contributions to the American Stroke Association. This year, she participated in the Train to the End Stroke Campaign by soliciting her Spelman colleagues to support her efforts as she hosted the “Steppin’ in the Name of Stroke” fund-raising event. Ms. Parker trained for and ran a 26.2-mile marathon on behalf of the American Stroke Association this past January.



Parker



Kuumba

Associate Professor of French **Dr. Soraya Mekerta** was invited to speak at the Seventh International Conference of the Arab Women’s Solidarity Association (AWSA) in Cairo, Egypt, held May 20–24. The theme of the conference was “Creativity, Dissidence and Women.” Dr. Mekerta presented her paper, “Poetic Justice: Naming Resistance and Dissidence in Local and Global Contexts” at a plenary session.

The Spelman College Sisters Center for WISDOM (Women in Spiritual Discernment of Ministry), a major program initiative of Sisters Chapel, funded by the Lilly Endowment Inc., is awarding six faculty and staff members with a course development mini-grant or professional development travel grant. The recipients are **Nami Kim**, assistant professor, philosophy and religion department; **Veta Goler, Ph.D.**, associate professor and chair of the dance and drama department; **Pushpa Parekh, Ph.D.**, associate professor; Ethel Waddell Githii, Honors Program; **Soraya Mekerta, Ph.D.**, assistant professor, foreign languages department; **Renita Mathis**, assistant director, public relations and communications; and **Frank Martin**, associate professor, art department. They will each receive \$2,500 for a course development grant or \$2,000 for a travel grant.

During the Founders Day 2005 Convocation, Spelman Board of Trustees Chair **Yvonne Jackson, C’70**, presented the True Blue Award to **Ms. Jo Moore Stewart**, director of publications and editor of the *Spelman Messenger* and *Inside Spelman*, in honor of her more than 26 years of service and commitment to the mission of Spelman College. With an artistic eye, discerning ear and innovative spirit, Ms. Stewart has helped to shape the visual and published brand that is Spelman. The photo editor of the book *Spelman: A Centennial Celebration* and an accomplished photographer, Ms. Stewart’s single photograph became one of Spelman’s most-beloved images – the poster, “Let Her First Step Be Towards Spelman,” that embodies the very essence and significance of the Spelman experience.



Pamela Garvey, teacher, Marian Wright Edelman Center; **Faye Milner**, administrative assistant, Foreign Language Department; and The Bonner Office for Community Service and Student Development were honored with the Spelman “E” Award. The awards, which recognize individuals and teams for exemplary customer service, were presented at the State-of-the-College address given by **President Beverly Daniel Tatum** on May 10.

The Spelman C-Force Team won the “Most Spirited Team” and the “First Place – Team Fundraising” awards as a participant in the American Cancer Society Relay for Life held April 16–17 in East Point. The South Fulton/Spelman Relay involved teams from the Atlanta University Center and South Fulton communities. Relay for Life is a celebration of cancer survivorship and community spirit. In addition, the event raises funds for American Cancer Society research, education, advocacy and patient services. Members of the C-Force Team were **Angela Wood, C’90**, Web content manager/editor, public relations/communications; **Ingrid Lassiter**, lead Webmaster, public relations/communications; **Brandi Williams, C2000**, Webmaster, public relations/communications; **Laurisa Claytor**, administrative assistant, OIRAP; **Jaki Washington**, employment coordinator, human resources; **Renita Mathis**, assistant director, public relations/communications; and non-Spelman staff team members **Adrienne Lance Lucas, C’90**, **Larry Steele**, **Jeffri Epps** and **Kip Giles**. They raised more than \$6,000.

During their 30th annual conference, The International Accelerated Learning organization honored **Dr. Angela Farris-Watkins, C'86**, associate professor of psychology, for her outstanding work. The group commended Dr. Farris-Watkins for her research, writing and implementation of key aspects of Accelerated Learning methodology in her instructional practices as well as her leadership, integrity and commitment to educating young women.

Teresa Johnson Ramey, associate dean of student affairs, is included on the newly released 2004 Civility List. Presented by Americans for More Civility, the National Civility Awards recognize public figures who have distinguished themselves by civilized behavior. The award honors Ms. Ramsey for creating Spelman's campus-wide Civility Week in 2004 to promote campus courtesy, discuss campus climate, and give the community an opportunity to talk openly and generate ideas for enhancement of a welcoming environment at the College.

Members of the Spelman College mathematics department made presentations at the annual Joint Mathematics Meetings held in Atlanta in January. **Dr. Sylvia Bozeman**, professor, co-organized a panel discussion, "Achieving Diversity in Graduate Programs, Part I: The Challenge To Retain Women"; **Dr. Colm Mulcahy**, associate professor/chair, coordinated 16 Mathematical Association of America minicourses and presented "An Unbeatable Deal in Card Tricks"; **Tasha Inniss**, associate professor, spoke on "Data Mining in the Undergraduate Curriculum"; **Dr. Jeffrey Ehme**, assistant professor, discussed "Uniqueness and Existence for Boundary Value Problems via Variational Equations"; **Dr. Nagambal Shal**, professor, presented "Collaborative Research: Training Environmental Statisticians Using Complicated Data Sets to Make More Informed Environmental Decisions," co-authored by **Dr. Monica Stephens**, assistant professor; and **Erica Elzey**, junior biology major, presented "Modeling of Massive Fractures in Rock Mass," based on research conducted under the supervision of **Dr. Alla Baloueva**, lecturer.

The award-winning "Oral Narratives and Digital Technology," a student-produced video documenting the yearlong collaborative project between Spelman's Women's Research & Resource Center and the Durban Institute of Technology may be viewed online at <http://www.aascu.org/alo/working/films04.htm>. The video documents South African women's voices during democratic transition and won third place at an inaugural international video competition in 2004. The student project headed by **Professor Ayoka Chenzira**, director of the Digital Moving Image Salon, and **Dr. M. Bahati Kuumba**, associate professor of women's studies, included junior **Juliana Montgomery**.

Andrea Williams, senior computer science major, presented her research, "Page-by-Page Protocol (PBPP): Reading Documents in Limited Bandwidth Scenarios," at the 19th National Conference on Undergraduates Research held April 21–23, 2005, in Lexington, Virginia. She worked with **Dr. Charles Hardnett**, assistant professor of computer science, to develop a protocol that will allow people to access select pages within documents such as PDF and popular word-processing formats.

On December 20, 2004, The Spelman College Museum of Fine Art was awarded a "We the People" grant from the National Endowment for the Humanities. The grant will support a comprehensive survey of the College's permanent collection of African American art. In addition, the museum received a Museum Assessment Program: Collections Assessment Grant, a prestigious peer review consultation award, from the Institute of Museum and Library Services on April 26, 2005. **Dr. Andrea D. Bardwell**, the director of the museum, was awarded a President's Award by the Women's Caucus for Art on February 17, 2005, and the 25th Anniversary Moving Forward Award from ArtTable in New York on April 7, 2005.

Ms. Lula Roberts, learning resources specialist/coordinator of the Peer Tutoring Program in the Learning Resources Center, received the Lifetime Achievement Award for longtime service at the annual 13th National Tutoring Association Conference in Chicago, on April 19, 2005. Eight tutors, including **DaNita McClain**, administrative assistant in continuing education, gave a conference presentation, "The Seven P's: Enhancing Study Strategies." Ms. McClain received the Administrative Assistant of the Year Award on April 27, 2005.

Eniola Mafe, a sophomore international studies major/economics minor, was selected as one of only 20 undergraduates from the United States and

Canada to be honored as a 2005 Goldman Sachs Global Leader. She joins 100 new Global Leaders worldwide being honored for academic excellence and leadership achievements by The Goldman Sachs Foundation and its partner organization, the Institute of International Education. Each Global Leader receives a \$3,000 grant for educational expenses. An active leader on campus, Ms. Mafe participates in Spelman's Women of Excellence Leadership series.

On April 9, 2005, **Felecia Pearson Smith**, director of the Bonner Office of Community Service and Student Development, was honored for being the first African American female to enter and graduate from the Candler School of Theology with a master of divinity at Emory University in 1977. She was recognized during the 15th anniversary celebration of the Program of Black Church Studies in Canon Chapel on the Emory campus.

Ms. Sharon Akiele, program coordinator of HeadStart/HUD in the continuing education department, was a panelist at the University/College Early Childhood Summit sponsored by the Texas Head Start State Collaboration Office at the University of Texas, San Antonio. Spelman represented HBCUs on a panel titled "University and Head Start Partnerships to Enhance the Quality of Early Childhood Teaching." Ms. Akiele spoke on the Spelman College Professional Training of Head Start Teachers training program.

Dr. Virginia Davis Floyd, C'73, received the 2005 National Community Service Award from the Spelman Board of Trustees. Dr. Floyd is the Visiting Scholar in Traditional Knowledge at Spelman College.

Appointments

Heather Lynn Hawes, C'89 has been appointed director of special events in the Office of Institutional Advancement. Ms. Hawes has worked in the corporate and nonprofit sectors for the past six years and has a master's degree in tourism administration and an event management certificate from George Washington University. She was the Spelman coordinator of Alumnae Programs from 1993 to 1998. Prior to returning to Spelman, Ms. Hawes was the corporate sales executive at MGR Foods Services at the Georgia World Congress Center in Atlanta.

Stephanie Bates, senior political science major, is the new Cadet Wing Commander of the Georgia Institute of Technology Air Force Reserve Officer Training Corps for spring semester 2005. She is responsible for all activities within the historically male-dominated 130-member cadet corps, including training, conduct and appearance. Ms. Bates is the first African American, first cross-town cadet and second female to serve in this position.

Ms. Jamila Canady, associate director of the continuing education department, has received a two-year appointment to the board of The International Alliance for Learning.

Dr. Kathleen Phillips-Lewis, associate professor and chair of the history department, has been appointed British Caribbean book review editor for H-Caribbean, which is the International listserv and Online Educational Network for Caribbean History. H-Caribbean is a section of H-NET, University of Michigan History Network.

Dr. Karen Brakke, assistant professor of psychology, has been appointed to a six-year term as editor of *Developments*, the quarterly newsletter of the Society for Research in Child Development.

Performances, Exhibitions & Published Works

The 2005 Spelman/Morehouse Senior Art Exhibition, "Juxtaposed," was on view at the Mason Murer Fine Arts Gallery until May 20. This is the third year a professional art gallery has hosted student work. The students produced their work under the guidance of Professor **Lev Mills**, the adviser of the Senior Portfolio Criticism class. "Juxtaposed" features installations, drawings, paintings, digital fine art and photographs. Seniors featured were **Kiana Cottrell, Andrea Ferguson, Yanique Moore, Anais Reid, Jessica Scott-Felder, Israel Shasanni** and **Audrey L. Taylor**.

A rousing rendition of Stevie Wonder's "Superstitious" clinched Spelman sophomore **Sara Stephens'** bid to become the 2005 Campus SuperStar. The talent competition is a fundraiser that showcases college students'

singing talents – simulating the hit show “American Idol.” The sophomore music major won the grand prize of \$5,000, plus the opportunity to be seen by top New York casting directors and recording producers. The event’s proceeds benefit Hillels of Georgia.

Lush vocals and spirited instrumentation characterize *Feelin’ Good*, the fourth and newest release by the Spelman Jazz Ensemble. The CD debuted on Feb. 25 and includes a tribute to Nina Simone. To purchase the CD, call **Joseph Jennings** at 404-270-5478 or e-mail jjennin@spelman.edu.

On March 3–5, the Spelman College and Morehouse Glee Clubs performed with Maestro **Robert Spano** and the Atlanta Symphony Orchestra in Symphony Hall. The program included classic songs from *Porgy & Bess* as well as portions of **William Dawson’s** *Negro Folk Symphony*. Under the direction of **Dr. Kevin Johnson**, the Spelman Glee Club toured California and the Rockies in the spring, performing in Los Angeles, San Francisco, Richmond, Oakland, and San Bernadino in California as well as Denver.

A collection by **Nancy Lowe**, *Hidden Wonders of the Appalachians: The Watercolors of Nancy Lowe*, is on exhibit at Atlanta’s Fernbank Museum from January 29 through July 4. Nancy Lowe, a research technician in the biology department, is a scientific illustrator whose paintings highlight some interesting species. She has spent several years in partnership with the U.S. National Park System documenting the findings of the Great Smoky Mountains All Taxa Diodiversity Inventory.

Professor of Music and College organist **Dr. Joyce Finch Johnson** will be one of the featured artists at the American Guild of Organists Northwest Convention (Region VIII) in Billings, Montana, on June 26 & 27, 2005. She will give an organ recital, conduct a workshop on African American hymnody, and serve as organist for an African-American Hymn Festival.

In March 2004, Associate Professor of Japanese **Dr. Xuexin Liu’s** article, “Politeness as a Social Strategy in Japanese Culture,” was published in the *Southeast Review of Asian Studies* (SERAS), Vol. 26, pp. 71–90. She presented three research papers: (1) “The Hip Hop Impact on Japanese Youth Culture” at the Southeast Conference of the Association for Asian Studies, January 14–16, 2005, University of Kentucky, Lexington; (2) “Ganguro in Japanese Youth Culture: Self-Identity in Cultural Conflict” at the Southern Japan Seminar Spring 2005 Conference, February 25–26, 2005, Florida International University; (3) “A Lexicon-Driven Approach to ‘Suru’ in Japanese Lexical Structure” at the 20th Annual Conference of the Southeast Association of Teachers of Japanese, March 10–20, 2005, at the Georgia Institute of Technology, Atlanta.

In his recently published work, *Card Colm*, **Dr. Colm Mulcahy**, associate professor and chair of the mathematics department, explores mathematical card principles and effects for fun. More information about his writings and presentations on this topic can be found at: <http://www.spelman.edu/~colm/cards.html> or <http://www.maa.org/news/cardcolm.html>. ●

2005 Commencement Speaker Activist Zinn Inspires a New Spelman Generation

Continued from page 1.

Those years at Spelman were the most exciting years of my life, the most educational, certainly. I learned more from my students than they learned from me. I learned something about democracy – that it does not come from the government, from on high. It comes from people getting together and struggling for justice.

I was lucky to be at Spelman at a time when I could watch a marvelous transformation in my students, where they were so polite, so quiet, and then suddenly they were leaving the campus and going into town; and sitting in and being arrested; and then coming out of jail full of fire and rebellion. You can read all about that in **Harry Lefever’s** book *Undaunted by the Fight*. One day **Marian Wright** (now **Marian Wright Edelman**), who was my student at Spelman and was the first arrested in the Atlanta sit-ins, came to our house on campus to show us a petition that epitomized the transformation that was taking place at Spelman College. Marian had written on top of the petition: “Young Ladies Who Can Picket, Please Sign Below.”

My hope is that you will not be content to just be successful in the way that our society measures success, that you will not obey the rules, when the rules are unjust, that you will act out the courage that I know is in you.

By being here today, you are already standing on your toes, ready to leap. My hope for you is a good life. ●

NEWS BRIEFS

■ **Dr. Johnella Butler** has been appointed as provost and will be joining the Spelman College community on September 1, 2005. A very experienced administrator who worked many years as a faculty member and department chair at Smith College, Dr. Butler currently serves as associate dean and associate vice provost of the Graduate School at The University of Washington. In addition, she is a noted scholar specializing in African American literature, and is considered a pioneer in curriculum transformation and leader in bringing together the content of ethnic studies and women’s studies. “Dr. Butler’s exemplary success both as an administrator and a scholar, her understanding of and commitment to the mission of Spelman College and her collaborative leadership style all combine to make her an outstanding choice for this critically important leadership position at the College,” said **President Beverly Daniel Tatum**.



■ The Spelman College robotics team, affectionately known as SpelBots, is headed to Osaka, Japan, to compete in the International RoboCup 2005, July 11–19. The Coca Cola Company has provided \$50,000 in support of the team, which will be participating in the Sony AIBO four-legged robots segment. NASA is also a team supporter. Under the direction of **Dr. Andrew Williams**, assistant professor of computer and information sciences, the SpelBots include **Aryen Moore-Alston, C’2005**, **Brandy Kinlaw, C’2005**, **Ebony Smith, C’2006**, **Karina Lyles, C’2007**, **Ebony O’Neal, C’2007** and **Shinese Noble, C’2005**. The team successfully competed in their first tourna-

ment, the RoboCup U.S. Open, May 7–10 at Georgia Institute of Technology. Although the team was not a winner in three matches, (0–1 vs. Georgia Tech, 0–5 vs. University of Texas-Austin, and 1–2 vs. Columbia University), they victoriously scored their first goal in competition, which is very unusual for a first-time team competing against experienced graduate students. The Office of Public Relations/Communications, under the leadership of executive public relations director **Tomika DePriest, C’89**, is producing a special documentary about the nation’s first all-female robotics team to compete in these two prestigious tournaments.

■ Effective May 1, 2005, **Eloise Abernathy Alexis, C’86**, was appointed vice president of Institutional Advancement. Ms. Alexis joined the Office of Institutional Advancement in 1991 as assistant director of Alumnae Affairs. She subsequently held several positions within the division including assistant director/coordinate of Alumnae Giving, development officer and director of Alumnae Affairs and Annual Giving. Under her leadership the College has had an impressive increase in alumnae giving – from 13 percent in 2002 to 21 percent in 2004. Ms. Alexis is a well-known and highly respected member of the Spelman community whose experience in constituency relations and fund raising will forward the College’s advancement initiatives.

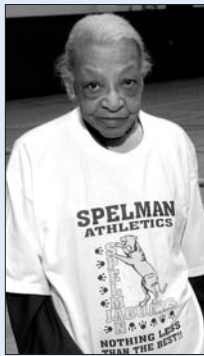


■ Thanks to the Media and Information Technology Division, Intel and the United Negro College Fund, students now have wireless access to

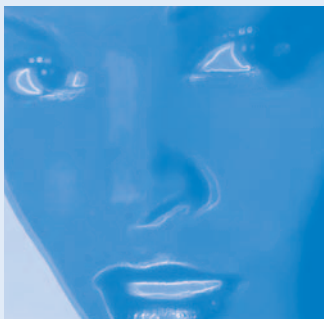
Continued on next page.

the Web both inside and outside the classroom in any of Spelman's academic buildings — Cosby Center, Giles Hall, Tapley Hall, Academic Computing Center, Science Center and Read Hall. Through the Intel/UNCF project, Spelman received nearly \$100,000 of in-kind support for the project. "Students expect to have technological experience that will make them more marketable in the work place," says **Delores Barton**, chief information officer. "Providing wireless at Spelman College meets this expectation and ensures that our campus remains competitive in the 21st Century." In April, Intel awarded three laptop computers to Spelman students, including two Spelbot team members **Ebony O'Neal, C2007** and **Ebony Smith, C2006**.

■ On April 6, 2005, the Marguerite F. Simon Gymnasium in Read Hall was dedicated in a special ceremony honoring **Miss Marguerite Simon, C'35**, for her leadership in physical education and health. An instructor of health and physical education at Spelman College from 1943 to 1980, Miss Simon's roles as alumna, instructor, donor, volunteer and Spelman historian chronicle a relationship of love and sacrifice and an unconditional commitment to the aims and ideals of the mission of the College.



■ From June 10 through September 25, 2005, *Women & Blues: A Combination of Two Exhibitions: Amalia Amaki: Boxes, Buttons and the Blues* and *Women In Blues & Jazz* will be shown at the National Museum of Women in the Arts (NMWA) in Washington, D.C. The Amaki exhibition features 80 mixed-media works by renowned artist **Amalia Amaki** who



is an art historian, a curator, and a scholar of American art and culture. The ancillary exhibition *Women In Blues & Jazz* is comprised of 45 photographs of female blues and jazz performers from

the 1920s through the 1950s. A collaboration between the National Museum of Women in the Arts and the Spelman College Museum of Fine Art, *Amalia Amaki: Boxes, Buttons and the Blues*, will be on view at the Spelman College Museum of Fine Art from January 26 through May 13, 2006. A color catalog about Amalia Amaki, including essays by **Dr. Andrea D. Bardwell**, director of the Spelman College Museum of Fine Art, and **Dr. Gloria Wade-Gayles**, the eminent scholar's chair of Independent Study at Spelman College, accompanies the exhibition. Co-published by NMWA and Spelman in association with University of Washington Press, this 136-page hard-cover edition includes an illustrated checklist and retails for \$35.

■ The Spelman College Museum of Fine Art was the only college or university with the distinct privilege of presenting the traveling exhibition, "African American Masters: Highlights from the Smithsonian American Art Museum," held from March through May 2005. The exhibition featured 61 paintings, sculptures and photographs from the Smithsonian American Art Museum's collection. Featuring works emphasizing specific experiences of being Black in America, the collection included masters **Richmond Barthé, Romare Bearden, Roy DeCarava, Mel Edwards, William H. Johnson, Lois Mailou Jones, Jacob Lawrence, Gordon Parks, Betye Saar and Renée Stout**.

■ In an initiative to celebrate and promote diversity in the mathematical sciences, the Spelman College Mathematics Department presented the Infinite Possibilities Conference April 1–2, 2005, co-organized by **Dr. Tanya Henneman, C'95**, Lifelong Medical Care, Berkeley, California, and **Dr. Leona Clark, C'95**, mathematics department, Bennett College for Women, Greensboro, North Carolina. Held in the Albro-Falconer-Manley Science Center, the conference was the first to focus on the achievements and needs of women mathematicians from underrepresented minority groups. The event hosted 150 participants comprising professionals, undergraduate and graduate students from various fields of mathematics. Activities included a professional development workshop series, a panel discussion on graduate studies in mathematics, research talks, student poster sessions and roundtable discussions. The keynote speaker was **Dr. Evelyn Boyd Greenwille**, the second African American woman to receive a doctorate in mathematics. The conference culminated with a banquet honoring the late **Dr. Etta Z. Falconer**, former associate provost for the science programs and policy, acting provost and Fuller E. Callaway professor of mathematics at Spelman College. During this event, the first Dr. Etta Z. Falconer Award for Mentoring and Commitment to Diversity was presented to **Dr. Janis Oldham**, mathematics faculty member at North Carolina A&T, and the Dr. Etta Z. Falconer Student Scholarship was initiated and awarded to **Tamara Flournoy, C2006**. The conference received support from the U.S. Army Research Office (\$30,578), National Science Foundation (\$20,080), and Toyota (\$3,000) with **Dr. Nagambal Shal**, professor of mathematics, and **Dr. Monica Stephens**, assistant professor of mathematics, serving as co-project directors.

■ On January 13, 2005, The Center for Leadership & Civic Engagement (LEADS) sponsored a research conference for new scholars from nine institutions to address how scholars can work with communities to facilitate communication, create decision-making processes and effect change. The participants explored questions such as "What does public life mean to scholars? What are students learning about public life at our institutions? What are the opportunities on our campuses for addressing the challenges that face contemporary democracies?" **Barbara Nesin**, associate professor and chair of the art department, presented her research on tensions between the Black and Jewish communities in the face of ever-escalating conflicts in the Middle East.

In her research, she used art as a means for discovering, articulating, and sharing social concerns. The result of a two-year collaborative study by Joffre T. Whisenton and Associates Inc. and the Kettering Foundation, the conference was offered to new scholars from Spelman College, Clark Atlanta University, San Diego State University, Tennessee State University, American InterContinental University, Atlanta Metropolitan College, Alabama A&M University, Tougaloo College and American Indian Head Start Program.

■ On April 29, 2005, approximately 1,000 middle and high school students and their parents from the Atlanta Public Schools (APS) arrived on the Spelman College campus to attend the second annual Parent University, a collaboration between the College and APS's 21st Century Community Learning Centers (CCLC). With the theme and goal of "Partnering to Achieve Student Success," Parent University offered a day-long seminar of about 30 workshops to better equip parents and students for their navigation through the lifelong education process. In January 2004, the College received a \$1.5 million grant to establish and conduct Project Nobility, a 21st CCLC, at Brown Middle School in the West End community.

■ From March 31 through April 2, 2005, the College presented "Kenyetta: A Festival of Women in Jazz," a four-day celebration to honor female leaders in that genre. Established stars and emerging talent, including **Valerie Capers, Kathleen Bertrand, Tia Fuller**, and the Spelman College Jazz Ensemble performed during the festival. The event — sponsored by the Spelman College Music Department, Comparative Women's Studies, African Diaspora and the World, the Ethel Waddell Githi Honors Program, Jazz Ensemble and the Center for Leadership and Civic Engagement — paid a special tribute to the legacy of **Mary Lou Williams**, great jazz pianist, composer/arranger, educator and humanitarian.



■ On June 8, 2005, the Spelman College community attended the Celebration of Life services for **Ms. Ethel Poole**, assistant registrar, who for 38 years served under the administrations of five Spelman presidents — **Drs. Albert Manley, Donald Stewart, Johnnetta Cole, Audrey Manley and Beverly Daniel Tatum**. During her tenure, Ms. Poole helped to shape and mold the minds, thoughts and actions of young Spelman students. Having had Ms. Poole as a mentor, **Dr. Cynthia Spence**, associate professor of sociology and director of UNCF Mellon Program, eloquently described Ms. Poole's service and dedication to the College through the last lines of the Spelman hymn — "... And when life's race is won, Thy noble work is done, Oh God, forever bind our hearts to Thine." ●

Spelman's Second Annual Women of Color Leadership Conference Proclaims the Power of 'Difference'

The **Women of Color – Leadership in the 21st Century: Embracing Our Differences** leadership conference, held on May 11–12, 2005, and sponsored by Spelman College's Center for Leadership & Civic Engagement, sought to provide answers to the questions that are central to how women of color view themselves and each other:

Are we a "we"? Do people of color see ourselves as similar? If so, in what ways? If not, how do our communities differ? How do we acknowledge our commonalities and embrace our differences to become more consciously linked to an expanded worldview? And why is this important, and what are the benefits?

"Cultural literacy and 'dialogue across difference' connect our communities and create global shifts of power," says **President Beverly Daniel Tatum**. "This year's conference provided us with a unique opportunity to explore the ABCs of diversity: **a**ffirming identities, **b**uilding communities, and **c**reating cultural leadership."

As the first public event to take place in the newly refurbished Sisters Chapel, the conference brought together more than 900 Black/African American, Latina/Hispanic, Native American/American Indian, and Asian/Pacific Islander women to examine issues that are common to *all* women: poverty, access to education, mass media images and advancing diversity, multiculturalism and gender equity within and outside of the workplace.

Compelling keynotes by **Irene Natividad**, president of Global Summit of Women, and **Adela Cepeda**, president of A.C. Advisory Inc., identified the virtues and values of cross-cultural cooperation, collaboration, mentorship and sponsorship. Ms. Natividad, a powerful leader of Filipino descent, says: "It's not enough to succeed, you have to pull someone along with you!" In honoring the memories of her mentors, the late congresswomen/activists **Shirley Chisholm** and **Bella Abzug**, she underscored the the power that lies in building coalitions across race and in women working together toward common goals. "Together, we can become an even greater force to be reckoned with if we combine our resources to form a PAC [political action committee] in support of women of color candidates and our collective political agendas."



Adela Cepeda, Beverly Daniel Tatum, Irene Natividad, Jane E. Smith



Anne Eleanor Roosevelt



Gwen Ifill



Keisho Scott



Kerstin Roper, Ingrid Saunders Jones, Beverly Daniel Tatum, Jane E. Smith

Likewise, Ms. Cepeda's success as a leader in Chicago is supported by a cadre of women leaders to whom she looks for personal and professional support. She noted, "Having few Latina peers or mentors, it has been other women who have helped me in my fight to eradicate discrimination and dispel the stereotypical myths and misconceptions often associated with Latina women and the Hispanic community."

The JPMorgan Chase case study and panel discussion, "Women of Color Network: Challenge and Opportunity," reaffirmed the benefits

of establishing women of color affinity groups at the corporate level. Further sanctioning the need for meaningful dialogue and effective collaboration among women of diverse ethnicities, the panelists shared the step-by-step process they used to build and support a viable pipeline of candidates for senior-level positions.

Equally important to the status of women is how the media portray "difference." **Gwen Ifill's** keynote address, and the ensuing discussion by media icons **Michel Martin** of

ABC News, **Diane Weathers** of Essence, **Ninette Sosa** of CNN Radio, **Mae Cheng** of Newsday and **Marely Shebala** of the Navajo Times. They provided a glimpse into the work these journalists are doing, in an industry dominated by "aging White men," to ensure that the media images of women and people of color remain free of bias and stereotypical characterizations.

Dr. Tatum, **Dr. Beverly Guy-Sheftall**, and the Grinnell College sociologist, **Dr. Kesho Scott**, were joined by almost 80 other presenters and facilitators. Their seminars – about overcoming the psycho-emotional consequences of chauvinism and racial intolerance – were supplemented by skill-building workshops on entrepreneurship, board membership,

the performance evaluation process and building one's sphere of influence.

Dr. Jane E. Smith, executive director of Spelman LEADS, is already in the throes of planning the next conference, Building Bridges, to be held May 10–11, 2006. "Next year's conference will significantly advance the scope of our leadership development initiative by moving us beyond our national borders to explore the international alliances to be developed with women of color leaders who live and work around the globe," she said. ●

Second Annual Legacy of Leadership Awards Luncheon

This year's Legacy of Leadership Awards Luncheon recognized four leaders:

Cari M. Dominguez, chair, U.S. Equal Employment Opportunity Commission

Ingrid Saunders Jones, senior vice president, Corporate External Affairs and chairperson, The Coca-Cola Foundation

Dr. Shakti Butler, executive director, World Trust Educational Services, Inc. and

producer/director, *The Way Home and Light in the Shadows*

Rosalind Brewer, C'84, president, Global Nonwovens, Kimberly-Clark Corporation

The event was emceed by former fashion model **Gail O'Neill**, now host of the HGTV television show Mission: Organization, assisted by Spelman students **Kerstin Roper, C2005**, and **Meredith Coleman-Tobias, C2006**.

Legacy & Leadership: Following Faithful Footsteps

On April 11, 2005, Spelman College celebrated its 124th anniversary in the Martin Luther King Jr. Chapel on the campus of Morehouse College with the theme "Legacy & Leadership: Following Faithful Footsteps." The Founders Day speaker was **Kathleen McGhee-Anderson, C'72**, writer, producer and playwright, who spoke on "A Dream Called Spelman." She stated that "the founders, **Sophia B. Packard** and **Harriet E. Giles**, were following their bliss as they gave up all that they had, their security, their

possessions – to some, even reputation and regard – everything except their very beings, in service to the dream of Spelman. Harriet Giles loved music as a child. Music was her vocation, her avocation and her joy in the years before her dream of Spelman took root. Sophia and Harriet worked to pay their own travel expenses and salary to go to Atlanta to start this dream called



By Varnette P. Honeywood

Spelman gave me a place to dream my dreams. . . . Today we are gathered to thank [Sophia Packard and Harriet Giles] and to dedicate and re-dedicate ourselves to the mission of Spelman College, which lives on in us all, the mission that they set forth, 'to strive, to seek, to find and not to yield.'"

During the Founders Day convocation, honorary degrees – Doctor of Fine Arts – were also con-



Kathleen McGhee-Anderson



Samella Lewis



Varnette P. Honeywood



Joie Lee



Aurelia Doris Robinson

Spelman. And when it came down to it, Harriet sold her piano. She wrote with no nostalgia, no sentiment, the plain hard facts, "Sold my piano – hard thing for me to do. But thought it best."

Receiving an honorary degree – Doctor of Fine Arts, Ms. McGhee-Anderson noted that the founders had shown us that no dream, if it is noble, is impossible. "I would not have had my name on the credit of any movie, TV show or play if I hadn't attended Spelman College. Spelman gave me faith. Spelman gave me confidence. Spelman gave me the knowingness that I could and would be successful, and most of all,

ferred on artists **Varnette P. Honeywood, C'72**, and **Dr. Samella Lewis**. **Dr. Aurelia Doris Robinson, C'47**, retired educator, received the 2005 Founders Spirit Award. The first Legacy Award was presented to **Zimmie Jackson Shelton, High School C'25** and College **C'29**, retired art teacher, and her grandson, director/filmmaker **Shelton "Spike" Lee**. Actress **Ms. Joie Lee** accepted the Legacy award on behalf of her grandmother and brother. ●

(See "Spelman Salutes" for Founders Day Fannie Lou Hamer and True Blue honorees.)



350 Spelman Lane S.W.
Atlanta, Georgia 30314
www.spelman.edu

Non-Profit Org.
U.S. Postage
PAID
Atlanta, Georgia
Permit No. 1569