

## In the Year of the Sciences at Spelman, Commencement 2000 Marks Largest Class in History

*Renowned Physicist and  
Former Chair of the  
U.S. Nuclear Regulatory  
Commission to Keynote Event*

**A** legend in U.S. history, Dr. Shirley Ann Jackson, has set numerous precedents in the field of physics. One of the first African American women in the United States to attain a Ph.D. in physics, Dr. Jackson was also the first black woman to receive a doctorate degree from the Massachusetts Institute of Technology (M.I.T.). In addition, she was not only the first African American, but she was the first woman of any race, to head the U.S. Nuclear Regulatory Commission.

In the tradition of Spelman, it is only fitting that Dr. Jackson, a female trailblazer, keynote the first commencement of the

century. She will address the largest class in history, 450 new graduates, who will go on to follow in her footsteps and make history in their perspective fields, as they prepare to embark on their new careers as the scientists, business leaders and entrepreneurs of tomorrow.

Dr. Jackson, a renowned theoretical physicist, currently serves as President of Rensselaer Polytechnic Institute in Troy, NY, and is a pioneer in the effort for African American women to head national

**Dr. Shirley Ann Jackson, one of the first African American women to receive a doctorate in physics in the United States, will deliver this year's commencement address.**

research universities in the United States.

Dr. Jackson's career, prior to becoming Rensselaer Polytechnic's president, has encompassed senior positions in government, industry, and research at the former AT&T Bell Laboratories; and in academics as a professor of theoretical physics at Rutgers University.

*Continued on  
next page.*



**Spelman's Commencement  
begins at 4 p.m., on Sunday,  
May 21, at the Cathedral of  
the Holy Spirit, located at  
4650 Flat Shoals Parkway  
in Decatur, Georgia.**

# Commencement 2000

Continued from page 1.

While chairman of the Nuclear Regulatory Commission (NRC), Dr. Jackson spearheaded the formation of the International Nuclear Regulators Association, where she served as chair from the association's inception. The association is made up of the most senior nuclear regulatory officials from Canada, France, Germany, Japan, Spain, Sweden, the United Kingdom, and the United States.

At AT&T Bell Laboratories in New Jersey, Dr. Jackson spent 15 years conducting research in theoretical physics, solid state and quantum physics, and optical physics. As a result of her research, she was named a fellow of the American Academy of Arts and Sciences and of the American Physical Society. She also holds 10 honorary doctorate degrees.

Prior to her government service, Dr. Jackson served on the boards of many major corporations. She is currently a director of Sealed Air Corporation and FedEx Corporation, and UtilitCorp United.

## A MESSAGE from Manley

**T**his has been a very exciting and productive second semester. First, the Board of Trustees met and approved the Spelman College Strategic Plan: A Blueprint for the Future. This important document will serve as our road map to the future through the year 2010.

During the first week of March, the visiting team from the Southern Association of Colleges and Schools (SACS) chaired by Dr. Elisabeth S. Muhlenfeld, President of Sweet Briar College, conducted a site visit for the purpose of reaffirming the College's accreditation.

This was the result of an 18-month process of self-evaluation conducted by the College. Every 10 years, colleges and universities must undergo this process. I am proud to report that the visit was a success and the team provided us with one commendation for our Comprehensive Writing Center, and 29 very useful recommendations to strengthen the College.

Our self-study co-chairs, Dr. Bernice Scott and Dr. Daryl White, have done an extraordinary job in leading us in this effort and we applaud them. We will respond to the team's recommendations within several months and will receive a final report from SACS in December.

Capital projects are progressing as we planned. We opened the doors to a brand new and renovated MacVicar Hall this past February, and our Health Services and Counseling Services staffs thoroughly enjoy their new space as well as the enhanced levels of service they are able to deliver as a result.

Phase one of the new Science Center is nearing completion with a move-in process scheduled to begin this month.

It is an exciting time for Spelman, and we thank you for your continuous support in helping to make Spelman College a model institution of excellence in education.

Audrey Forbes Manley  
President



## Contents

### Features

- 1 Commencement 2000 Marks Largest Class in History
- 3 Spelman Museum Features Art Exhibitions by Renowned African American Artists David C. Driskell and Romare Bearden
- 4 Spelman National Conferences Address Need to Engage Minorities in the Sciences
- 7 Former Editor of *Glamour* Magazine Leaves Spelman \$50,000

### Departments

- 2 A Message from Manley
- 6 Partner Profile
- 6 Board of Trustees Profile
- 8 Mark Your Calendar



**SPELMAN COLLEGE**  
350 Spelman Lane S.W.  
Atlanta, Georgia 30314

**EDITOR**  
Natasha Daniels

**EDITORIAL COMMITTEE**  
Eloise Abernathy  
W. Christopher Cason  
Karen Clay  
Trisa Long Paschal  
Jo Moore Stewart

**COPY EDITOR**  
Terri S. Simmons

**PHOTOGRAPHER**  
Bud Smith  
Bill Moore

*Inside Spelman* is published three times per academic year for a readership that includes alumnae, trustees, parents, students, faculty, staff and friends of the College. The newsletter is dedicated to informing the Spelman College family about news, upcoming events and issues in the life of the College. Recommendations for story ideas are welcome.

# Spelman Museum Features Art Exhibitions by Renowned African American Artists David C. Driskell and Romare Bearden

**T**he Spelman College Museum of Fine Art opened its spring season with two exhibitions featuring the paintings and works on paper by one of America's most esteemed artists and art historians, David C. Driskell, as well as the collages and serigraphs by the preeminent modernist, Romare Bearden. The exhibitions will run concurrently through Monday, May 22, 2000.

**ECHOES:** The Art of David C. Driskell features a vibrant array of figural and abstract paintings, drawings, collages, and prints that explore the vision of nature, humanity, and spirituality of this Eaton, Georgia native.

Although Driskell developed an interest in African art in the early 1950s while studying at Howard University, it was not until his first visit to Nigeria in 1969 that he realized the spiritual bond he held with African ancestral arts.

This connection with his cultural past and the influence of friends such as Bearden, continues to influence his work. This exhibition, which was organized by the University of Maryland Art Gallery, College Park, is the first to take a retrospective look at Driskell's art from his early days as a student to his most recent work as an internationally recognized artist.

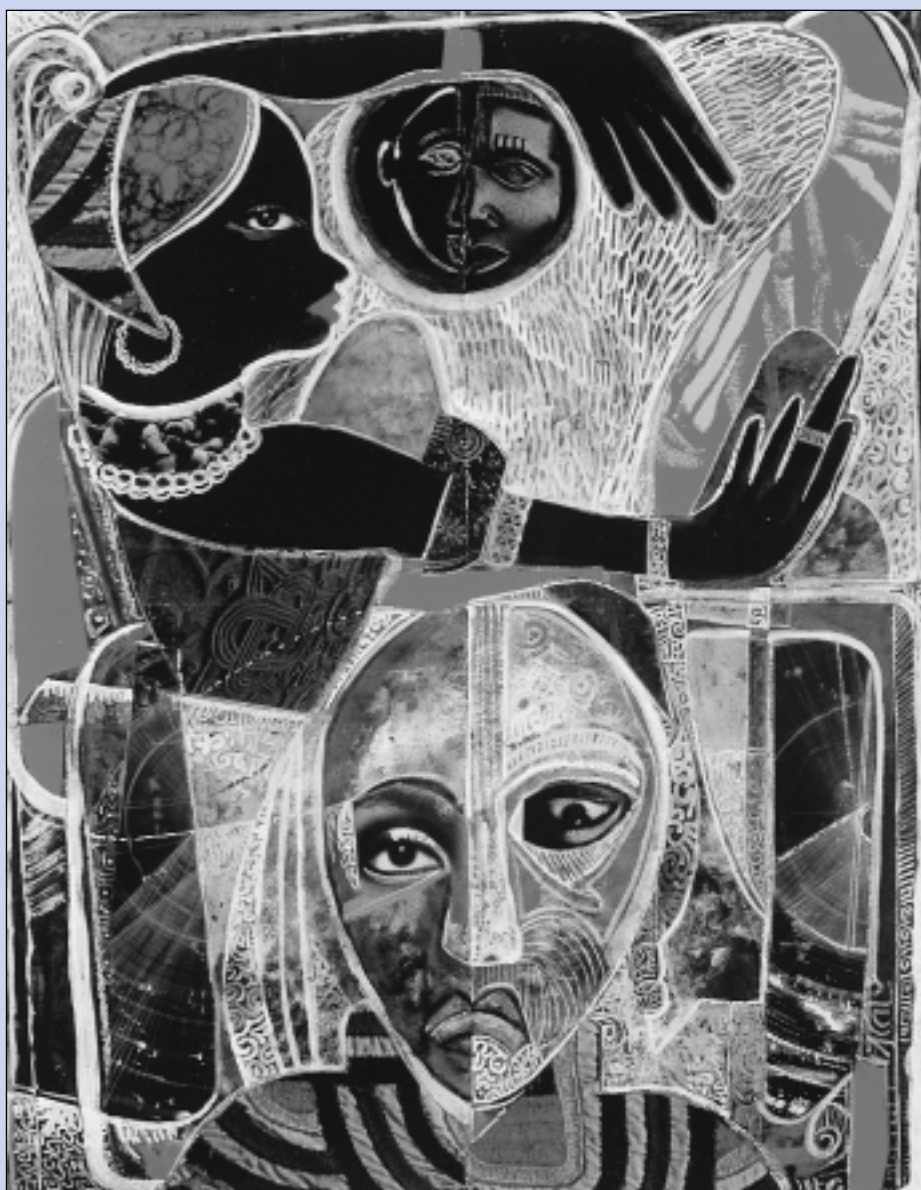
**ASCENDANCY:** The Art of Romare Bearden examines Bearden's art through his collages and prints from local collections which include the Spelman College Museum,

Clark Atlanta University Art Galleries, Hammonds House Galleries, Paul R. Jones Collection, Kerry Davis Collection, and the Thompson-Wilson Collection. Like his friend and fellow artist Driskell, Bearden's work also explores universal themes of nature and humanity as well as music and myth.

As an artist, art historian, curator, critic, and song writer, Bearden not only redefined the areas in which African American artists could achieve success in mainstream America, but did so in a manner which celebrated and advocated the struggles and achievements of African American life and culture.

Museum hours are 10 a.m. to 5 p.m., Tuesday through Friday, 12 noon to 4 p.m. on Saturday.

The museum is closed on Sundays, Mondays and major holidays. For information, call (404) 681-3643 ext. 2224.



**Memories of a Distant Past, 1975, is one of several works on display in the Spelman Museum of Fine Art now through May 22.**

# Spelman National Conferences Address Need

## Spelman Climbs Chart Among Highest in Nation to Send African American Students to Med School

**H**undreds of international science professionals, researchers, professors, and students converged in Atlanta during the months of February and April for two unprecedented scientific conferences. Hosted by Spelman College, the events featured distinguished guests ranging from congressional dignitaries to heads of science organizations.

**The 5th Annual Model Institutions for Excellence National Conference** took place April 5-8, at both Spelman and the Atlanta Wyndham Hotel. A highly lauded program involving six institutions, Model Institutions for Excellence (MIE) is a national effort to produce colleges and universities that will serve as models for improving the quantity and

quality of science, engineering and mathematics graduates.

Sponsored by the National Science Foundation (NSF) and the National Aeronautics and Space Administration (NASA), the MIE program enhances the educational infrastructure of the participating universities and colleges to educate students who have been historically underrepresented.

*“In the new century, innovations in science and technology are the key not only to the health of the environment, but to the improvements in the economy and quality of life for Americans.”*

**President Bill Clinton,  
State of the Union Address, 2000**

Conference activities included presentations by officials from the National Science Foundation as well as NASA. Breakout sessions provided opportunities for faculty and staff from the six participating institutions to interact with students. Students gave oral presentations as well.

“The conference is a way for us to come together and share best practices,” said Dr. Etta Falconer, principal investigator for the MIE program at Spelman. Dr. Albert Thompson, Jr., a professor of chemistry, serves as co-principal investigator for the program.

Dr. Falconer, Calloway professor of mathematics and senior advisor to the president, was a major force in making the MIE program a reality. In her many science leadership roles over the past 30 years, including a period as Associate Provost for Science Policy Programs, Dr. Falconer has been the integral reason for Spelman’s growing strength in the sciences.



# to Engage Minorities in the Sciences

“The MIE program is educating highly motivated students on a path toward success, and effectively changing the makeup of laboratories and research facilities to reflect the country’s rich diversity,” says Daniel S. Goldin, NASA administrator. MIE is one of a few national initiatives specifically designed to nurture high-quality science, engineering and math education that can be replicated at colleges and universities nationwide.

“We recognize the need for a diverse, highly skilled workforce to shepherd pioneering scientific research well into the millennium and beyond.” says Goldin. “It is only fitting that the scientific and technologic communities invest now in programs like MIE to inspire inquisitive minds for future long-term gains. The MIE initiative has proven to be among the best investments for rewarding returns, not only for NASA, but for the nation.”

This past February, the College hosted another national contingency of researchers at the **First Annual Symposium of the**

**Research Infrastructure in Minority Institutions (RIMI)** program, February 18-21, at the Ritz Carlton Hotel in downtown Atlanta. RIMI focuses on biomedical and behavioral research topics and operates at Spelman under the watchful eye of Associate Professor of Biology Dr. Shelia McClure, who also serves as principal investigator for the RIMI program.

*Continued on page 7.*

*While uterine fibroid tumors affect approximately 25 percent of all women, African American women are five times as likely to develop such tumors — a health disparity addressed by Dr. Sheila McClure’s research presentation at the RIMI National Symposium.*

## Spelman’s Science Majors

Biochemistry

Biology

Chemistry

Computer Science

Mathematics

Physics

Engineering (Dual Degree Engineering Program)

Natural Sciences (Environmental Science concentration)

## Model Institutions for Excellence (MIE) Colleges

Bowie State University, Maryland

Oglala Lakota College, South Dakota

Spelman College, Georgia

Universidad Metropolitana, Puerto Rico

University of Texas at El Paso

Xavier University, Louisiana



## PARTNER PROFILE

*Merck & Co., Inc.* is a worldwide research-intensive company that discovers, develops, manufactures, and markets a broad range of innovative human and animal health products. Popular brand products include Pepcid, VIOXX, Propecia, and Crixivan to name a few.

A long-standing Corporate Partner, Merck has established the Merck Center of Science Excellence at Spelman College with a \$2 million gift as part of the UNCF/Merck Science Initiative. This is the largest corporate gift in the College's history. The center, created five years ago, is designed to advance Spelman's capacity to conduct research in the biological and physical sciences, while

simultaneously providing a training ground to increase the representation of highly qualified African American students in these important fields of study. Specifically, the center supports the Merck Scholars Program, the Historically Black Colleges and Universities Faculty Training Program and the Merck Lecture Series. The center will also be represented in the College's new state-of-the-art Science Center by two additional Merck Teaching and Research Laboratories.

Raymond V. Gilmartin serves as the chairman, president and CEO for Merck & Co., Inc., headquartered in Whitehouse Station, NJ. The corporate liaison since the inception of the partnership is John Taylor, senior vice

president of The Merck Company Foundation. He works closely with Spelman Project Director Dr. Gladys Bayse, professor of chemistry, and Dr. Jerry L. Bryant, Jr., director of the Science Education Initiatives of The College Fund/UNCF, to insure successful implementation of the project.

Merck & Co., Inc.'s ongoing partnership has provided students and alumnae with a myriad of opportunities with the company, ranging from internships and Merck Fellowships to full-time employment. Truly a model for corporate/education partnerships, Merck is a valued member of the Spelman Corporate Partnership Program.

## *New Member Elected to the Spelman College Board of Trustees*

**T**he Spelman College Board of Trustees recently elected to its membership Dr. Bruce H. Wade, associate professor of sociology and anthropology, as a new faculty trustee.

Dr. Wade was elected to the College Council in 1998. He has served on several college committees including the Curriculum Committee, Continuing Education, Academic Computing and the African Diaspora and the World committees and was intricately involved in the process of data collection and analysis for the restructuring of the campus Health Services Department. In addition, he was chosen to serve as vice chair of the Institutional Effectiveness Committee and to work with Carl Hendrickson, Professor of Psychology, on the development and analysis of campus surveys of faculty, staff and students for the institutional self-study. Last summer he was selected to work with Illinois Power as a Faculty Fellow where he developed a minority purchasing program.

Before joining Spelman's faculty, he served on the faculties

of St. Mary's College, Wesleyan College, Morris Brown College and Morehouse College. His current research interests are prostate cancer, violence and hypertension in African American males. Other research interests include American hip-hop culture and substance abuse prevention.

He has also served as a consultant and trainer for community-based organizations, substance abuse prevention programs, violence prevention initiatives and community coalition programs over the past several years.

The 25-member Spelman College Board of Trustees consists of nationally recognized leaders ranging from corporate executives and noted academicians to entrepreneurs and civic leaders from across the country. Dr. Wade, along with the other board members, will be responsible for setting basic educational and fiscal policy for the College. Spelman's prestigious council is chaired by Spelman alumna, Dr. June Gary Hopps, dean and professor at the Boston College Graduate School of Social Work.

## Former Editor of *Glamour* Magazine Leaves Spelman \$50,000

**R**uth Whitney, past editor of *Glamour* Magazine only visited Spelman College once; however, that one visit made such an impact that she was inspired to make a \$50,000 bequest to the College in her will. Unfortunately in June 1999, Whitney lost her battle with Lou Gehrig's disease at the age of 71.

The editor was at the helm of *Glamour* magazine for 31 years and during this time influenced generations of women. Whitney was known for her bold decisions and frank intelligence. Under her guidance and leadership, *Glamour* became the first mainstream American women's magazine to feature an African American woman on its cover in 1968. During one of her last interviews before her death, she said, "I always felt that I had a mission. I wanted to broaden the scope of a magazine to go with women's lives. I never wanted to appeal to everyone. That's not what we're about, and that's not the secret of our success. I really wanted to make women feel good about themselves, not just about what they wore. I never shied away from controversy."

Whitney was also one of the first editors to publish an interview with Anita Hill following the Clarence Thomas hearings in 1991. When Whitney stepped down from *Glamour* in the fall of 1998, *Good Housekeeping* editor-in-chief Ellen Levine told *People* magazine: "Ruth set a standard for women's journalism by which we all should be measuring ourselves. She's so good, she's off the charts."

Whitney's vision and commitment to women and Spelman women, in particular, will always be remembered and appreciated. Through her philanthropic wishes her pioneering spirit will live on.



## Spelman National Science Conferences

*Continued from page 5.*

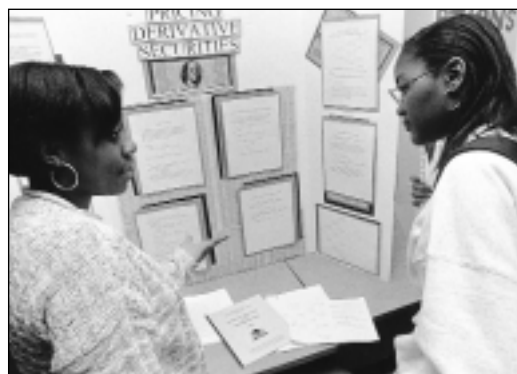
The conference brought together some of the nation's most renowned scientists currently engaged in research that could lead to breakthroughs in the fight against HIV/AIDS, and other life-threatening diseases. Papers delivered at the RIMI National Conference will also be published in the highly respected *Journal of Cellular and Molecular Biology*.

The RIMI initiative was established through a \$3.2 million grant from the National Institutes of Health-National Center for Research Resources, and the Office of Minority Health in 1996. It enables undergraduate and graduate degree-granting institutions to implement their plans to significantly enhance their capacity and competitiveness in the world of biomedical and behavioral research.

Spelman houses a Center for Biomedical Research as a part of the RIMI initiative. The multi-functional center serves as a frame-

work to increase collaborations and interdisciplinary exchanges. The center also provides an efficient as well as flexible research environment and provides a supportive scientific atmosphere and resource to attract and retain faculty of the highest quality.

As a result of the RIMI award, there has been an increase in the number of grants, publications and presentations by Spelman faculty in biomedical research areas, says Dr. McClure, whose own work in developing human uterine leiomyoma cell lines serves as a model system for gaining a better understanding of uterine fibroid tumor progression. While uterine fibroid tumors affect approximately 25 percent of all women, African American women are five times as likely to develop such tumors. The results of Dr. McClure's



research and that of other faculty in the Spelman Center for Biomedical research, were presented at the RIMI National Symposium.

"Together these nationally recognized programs, and Spelman's participation as well as leadership in both, illustrate the commitment that the College maintains in preparing its students for careers in the sciences and technology," said Spelman College president, Dr. Audrey Forbes Manley.

# M A R K Y O U R C A L E N D A R

David C. Driskell and Romare Bearden Art Exhibition, Spelman College Museum of Fine Art  
*Tuesday, March 7, 2000 - Monday, May 22, 2000*

Baccalaureate/Commencement  
*Saturday, May 20, 2000 - Sunday, May 21, 2000*

Morehouse/Spelman National Alumni Conference, Washington D.C.  
*Thursday, June 1, 2000 - Sunday, June 4, 2000*

**For additional information on upcoming events, visit our website at [www.spelman.edu](http://www.spelman.edu)**

**SPELMAN JUNIOR MALAIKA JONES** and her father Terry Jones, who is co-chair with his wife Marcella for Spelman's Parents Campaign for the Annual Fund, were among the many families that converged on the campus for Family Weekend 2000 held in February. Family Weekend is an annual event that invites families to share and participate in the Spelman experience with their daughters. The interactive weekend, provides families an opportunity to see the College from several aspects, and to gain knowledge of current events, issues and concerns present in the life of the College. Highlights of the weekend included the Celebration in Black, the Presidential Reception and the Family Feast.



**SPELMAN COLLEGE**  
350 Spelman Lane S.W.  
Atlanta, Georgia 30314

***Address Service Requested***

Non-Profit Org.  
U.S. Postage  
**PAID**  
Atlanta, Georgia  
Permit No. 1569